

Product Profile

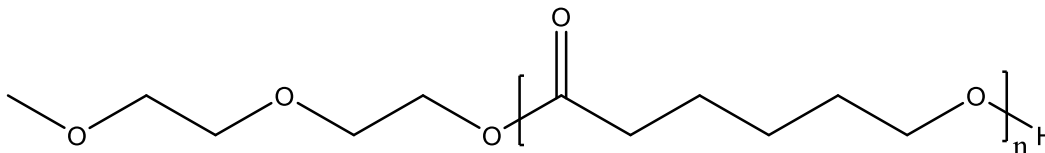
Identification

Product Name: Poly(ε-Caprolactone)

Product Lot Number: P7436-CL

CAS #: 24980-41-4

Chemical Architecture:



Composition:

Mn (g/mole)	8,000
Mw (g/mole)	9,500
Mw/Mn	1.20
dn/dc (mL/g) in THF at 30 °C	0.056

Method of Synthesis

The polymer is synthesized by ring opening polymerization process.

Solubility in different solvents:

THF	√	DMF	√
Alcohol	X	CHCl ₃	√
Toluene	√	Water	X

Validation of Architecture

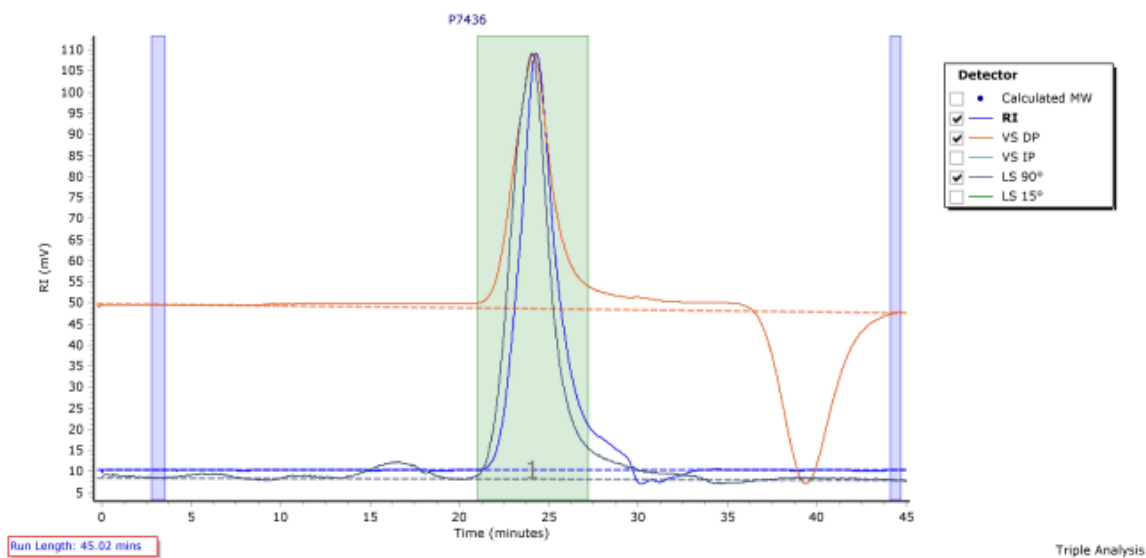
A. Gel Permeation Chromatography (GPC), SEC Profile:

Molecular weights were determined by Agilent Technologie 1260 Infinity II GPC/SEC System equipped with Triple detector (RI, Viscometer, RALS 90° and LS 15°) and three columns (PLgel, 7.5x300 mm, 5µm-10µm, 10⁵-10⁶Å). THF (stabilized BHT) with 1%(v/v%) TEA was the eluent. The flow rate was 1.0 ml/min.



P7436

Chromatogram Plot



Molecular Weight Averages

Peak	Mp (g/mol)	Mn (g/mol)	Mw (g/mol)	Mz (g/mol)	Mz+1 (g/mol)	Mv (g/mol)	PD
Peak 1	9237	7779	9319	10948	12636	10675	1.198

B. NMR (¹H NMR) of CL

CL sample was dissolved in CDCl₃. ¹H NMR spectra was determined using a 500 MHz. Bruker Avance III spectrometer.

