



Product Profile

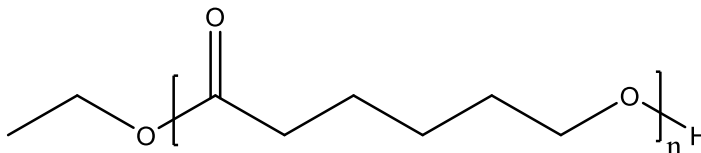
Identification

Product Name: Poly(ϵ -Caprolactone)

Product Lot Number: P7056B-CL

CAS #: 24980-41-4

Chemical Architecture:



Composition:

Mn (g/mole)	12,000
Mw (g/mole)	15,000
Mw/Mn	1.27
dn/dc (mL/g) in THF at 30 °C	0.043

Method of Synthesis

The polymer is synthesized by ring opening polymerization process.

Solubility in different solvents:

THF	√	DMF	√
Alcohol	X	CHCl ₃	√
Toluene	√	Water	X

Validation of Architecture

A. Gel Permeation Chromatography (GPC), SEC Profile:

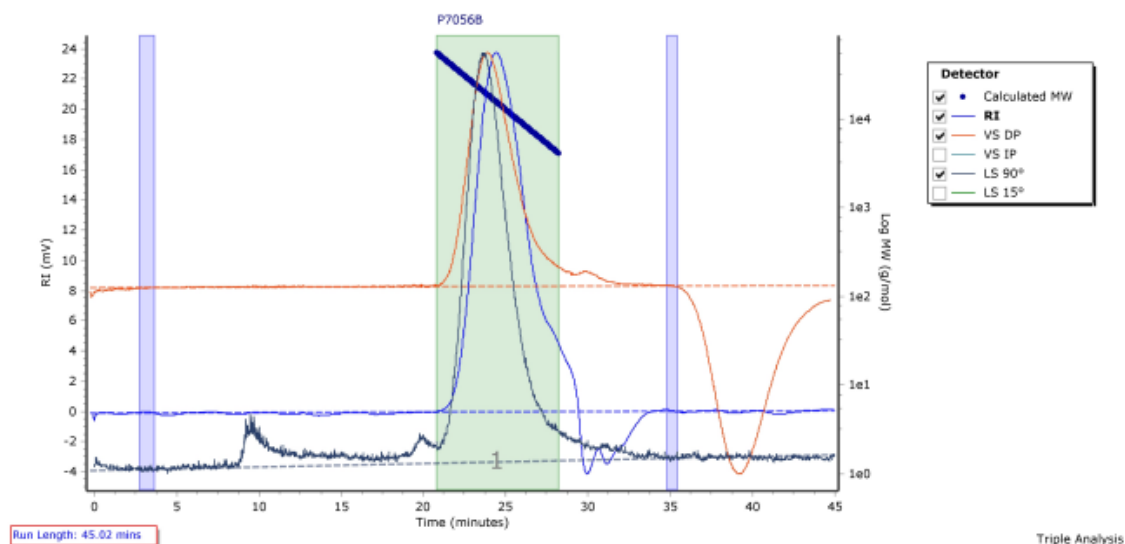
Molecular weights were determined by Agilent Technologie 1260 Infinity II GPC/SEC System equipped with Triple detector (RI, Viscometer, RALS 90° and LS 15°) and three columns (PLgel, 7.5x300 mm, 5 μ m-10 μ m, 10⁵-10⁶Å). THF (stabilized BHT) with 1%(v/v%) TEA was the eluent. The flow rate was 1.0 ml/min.



Polymer Source,™ Inc.

P7056B

Chromatogram Plot

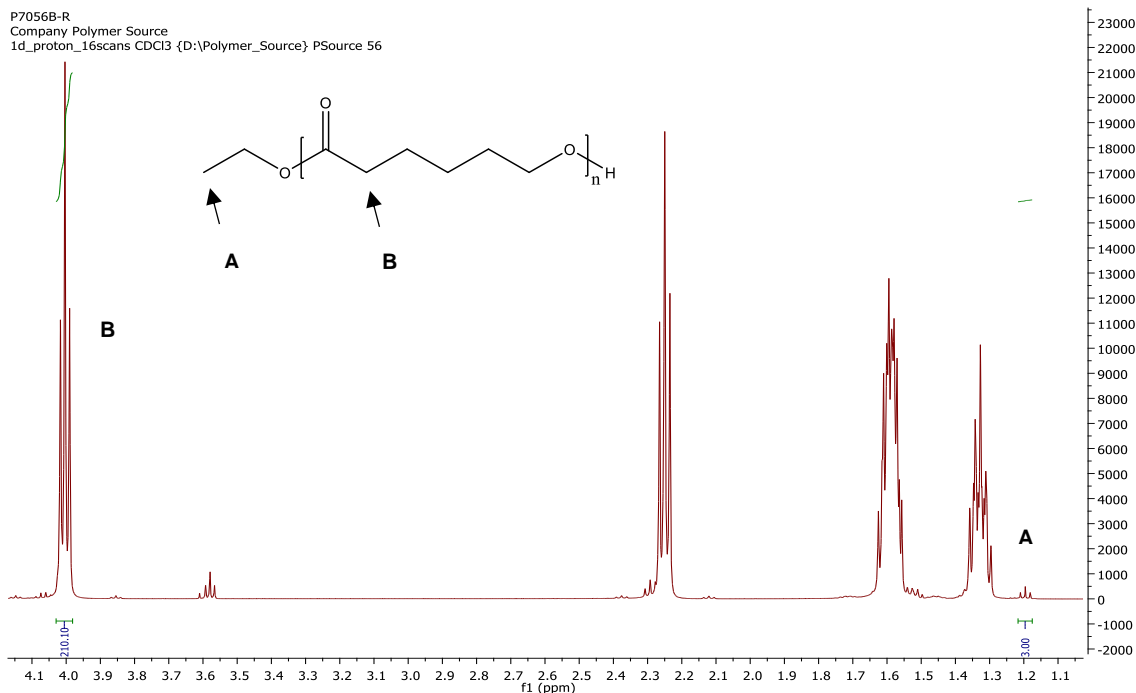


Molecular Weight Averages

Peak	Mp (g/mol)	Mn (g/mol)	Mw (g/mol)	Mz (g/mol)	Mz+1 (g/mol)	Mv (g/mol)	PD
Peak 1	15718	11849	15014	18314	21482	18082	1.267

B. NMR (¹H NMR) of CL

CL sample was dissolved in CDCl₃. ¹H NMR spectra was determined using a 500 MHz. Bruker Avance III spectrometer.



124 avenue Avro, Dorval (Montreal)
Quebec H9P 2X8 Canada
Phone : +1-514-421-5517 or +1-514-421-5506
support@polymersource.com
www.polymersource.ca