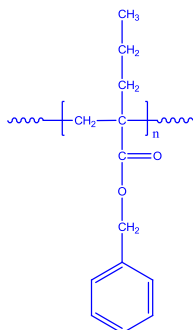


Sample Name: Poly(benzyl α -propyl acrylate)

Sample #: P6826- BzPrA

Structure:



Composition:

$M_n \times 10^3$	PDI
15.0	1.09
T_g ($^{\circ}\text{C}$)	66

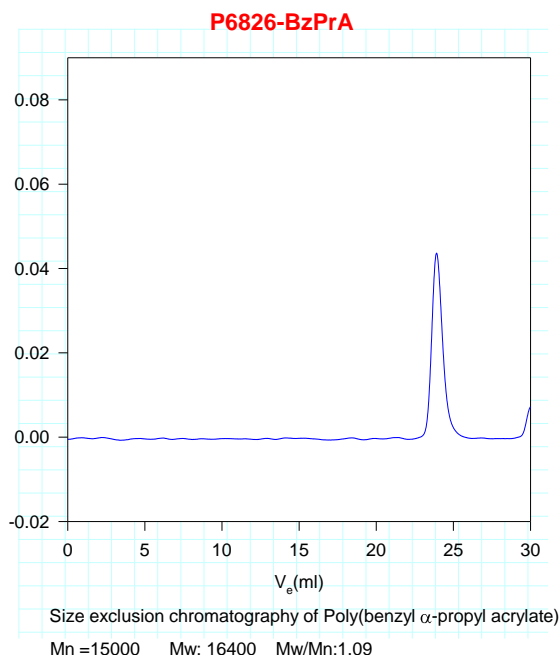
Characterization:

The molecular weight and polydispersity index (PDI) are obtained by size exclusion chromatography. Thermal analysis of the sample was carried out using a differential scanning calorimeter (TA Q100) at a heating rate of 10 $^{\circ}\text{C}/\text{min}$. The inflection glass transition temperature (T_g) has been considered.

Solubility:

Poly(benzyl α -propyl acrylate) is soluble in THF, CHCl_3 and toluene, and can be precipitated from cold ethanol and methanol.

SEC of sample:



DSC Thermogram for the polymer

