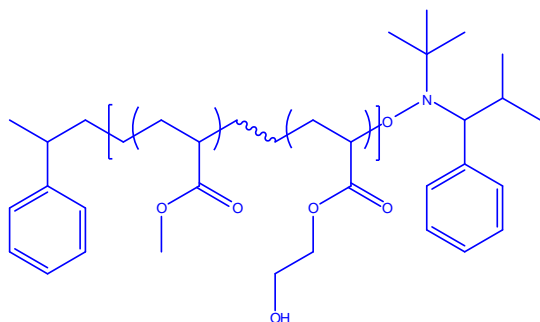


**Sample Name:**

Random Copolymer Poly(methyl methacrylate-co-hydroxyethyl methacrylate)

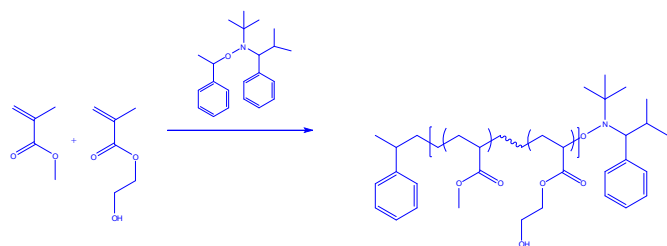
**Sample #: P6412F1-MMAHEMAran****Structure:****Composition:**

PMMA (mol%) : 97.5%, HEMA: 2.5%

Mn x 10 <sup>3</sup> MMA-co-HEMA	PDI
52.1	1.99
T <sub>g</sub> for the random copolymer	114°C

**Synthesis Procedure:**

Random Copolymer is prepared by nitroxide-mediated radical polymerization of HEMA and MMA .

**Characterization:**

The polymer was analyzed by size exclusion chromatography (SEC) to obtain the molecular weight and polydispersity index (PDI). The copolymer composition was calculated from <sup>1</sup>H-NMR spectroscopy.

**Thermal analysis:**

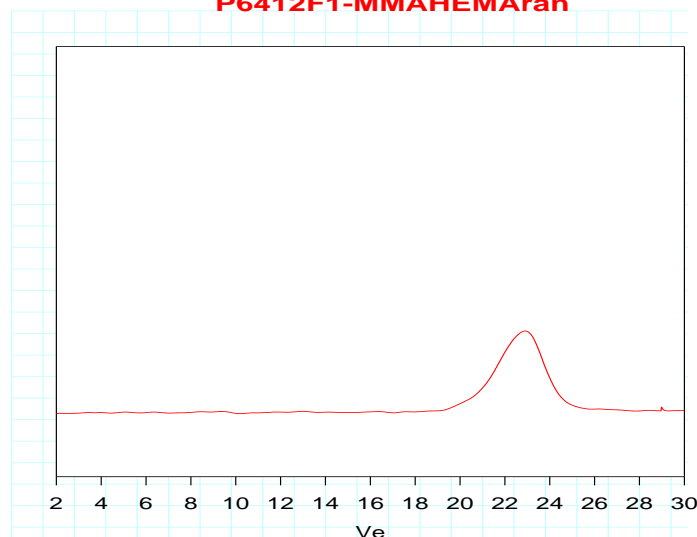
Thermal analysis of the samples was carried out on a TA Q100 differential scanning calorimeter at a heating rate of 10°C/min. The midpoint of the slope change of the heat flow plot of the second heating scan was considered as the glass transition temperature (T<sub>g</sub>).

**Solubility:**

Random Copolymer Poly(MMA-co-HEMA) is soluble in CHCl<sub>3</sub>, THF, DMF, toluene and precipitated out from methanol.

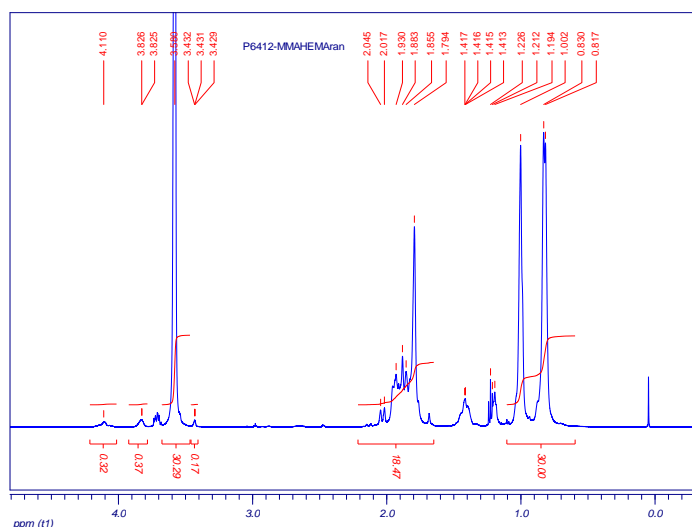
**SEC of the random copolymer:**

**P6412F1-MMAHEMAran**



Size Exclusion Chromatography of Poly(MMA-co-HEMA):

M<sub>n</sub> = 52100, M<sub>w</sub> = 103600, M<sub>w</sub>/M<sub>n</sub> = 1.99

**Proton NMR of copolymer:****DSC thermogram for the sample:**