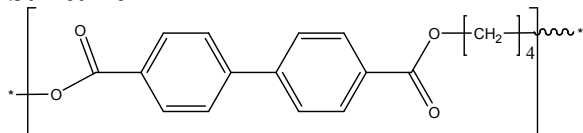


Sample Name: Poly (butylenes) bibenzoate)
Poly ester based on dimethyl biphenyl 4,4'-dicarboxylate and 1,4 butane diol

Sample #: P5640-BBB

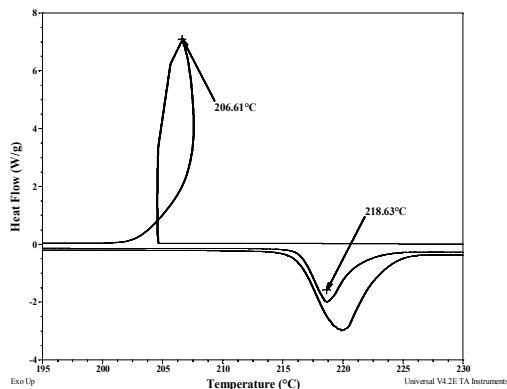
Structure:



Composition:

$[\eta]$ dl/g in Trifluoroacetic acid + methylene chloride (35/65 v/v) ratio at 25°C	T_m of the Polymer
0.32dl/g	293 °C

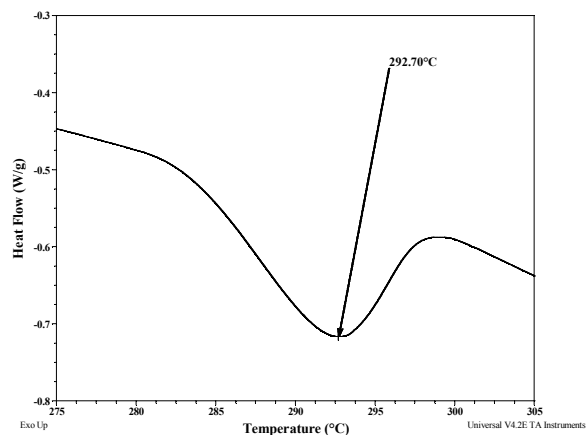
Thermogram for monomer (Biphenyl 4-4'' dicarboxy methylester) :



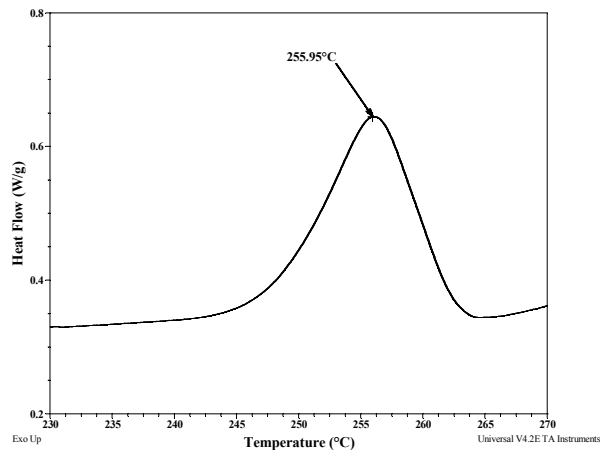
Heating rate (10°C/min)

<i>Sample</i>	<i>M.Pt. (T_m, °C)</i>	<i>Cryst. Temp. (T_c, °C)</i>
Monomer	219	206
Polymer (P5640)	293	256

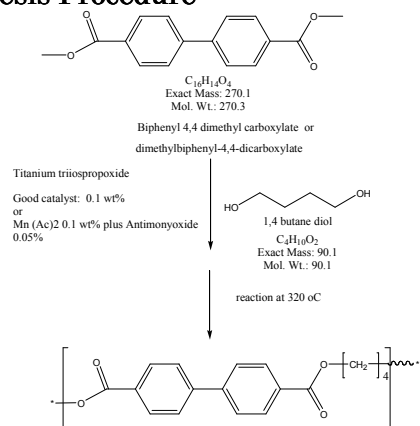
Melting curve:



Crystallization curve:



Synthesis Procedure:



Solubility:

Polymer is soluble in trifluoroacetic acid and methylene chloride mixture at room temperature.