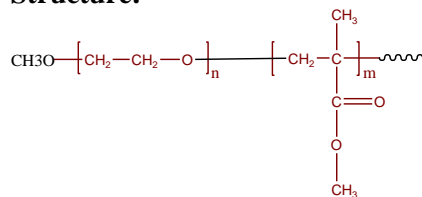


Sample Name:

Poly(ethylene oxide-b-methyl methacrylate)

Sample #: **P5164-EOMMA**

Structure:

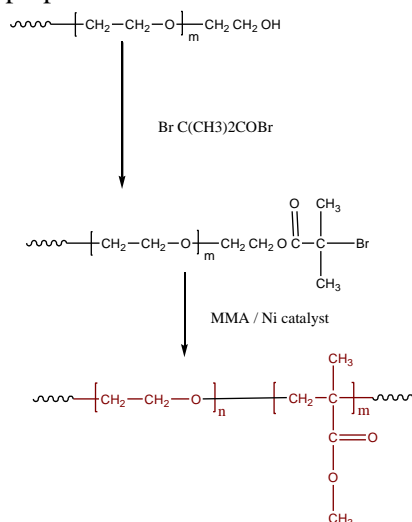


Composition:

$M_n \times 10^3$ PEO-b-MMA	PDI
4.2-b-5.4	1.15

Synthesis Procedure:

Poly (ethylene oxide-b-methylmethacrylate) is prepared as the scheme below:



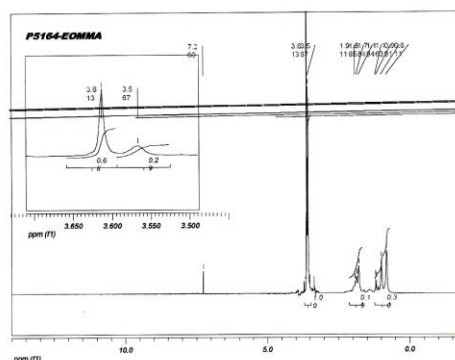
Characterization:

Polymer composition was determined by ^1H NMR taking the integration of PEG block at 3.66 ppm and methyl ester of PMMA block at 3.62 ppm. Molecular weights of the first block and the M_w/M_n of the final and the first block was determined by SEC in THF.

Solubility:

Poly (ethylene oxide -b- MMA) is soluble in CHCl_3 , THF, toluene. The polymer precipitated out from hexane.

^1H NMR spectrum of the Sample:



SEC of the block copolymer:

