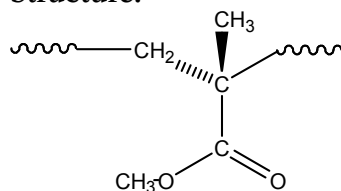


**Sample Name:** Carboxy terminated  
Poly(isotactic methyl methacrylate)

**Sample #:** P3873B-iMMACOOH

**Structure:**

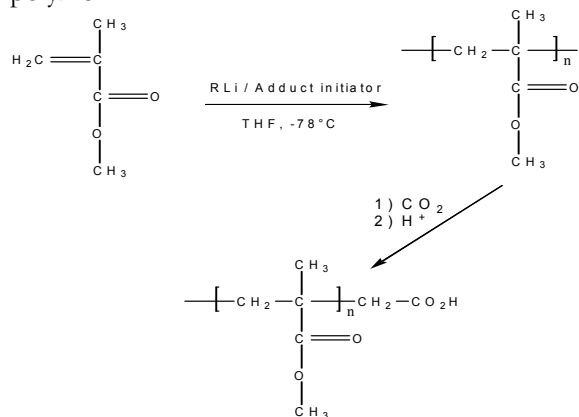


**Composition:**

$M_n \times 10^3$	PDI
40.0	2.6
Degree of functionality	90%
$T_g$ for the polymer	52°C

**Synthesis Procedure:**

Carboxy terminated poly(methyl methacrylate) is obtained by living anionic polymerization in the presence of and adduct. Termination of the reaction with dried  $\text{CO}_2$  produced a carbonyl end functionalized polymer:



**Characterization:**

The molecular weight and polydispersity index (PDI) are obtained by size exclusion chromatography. The carboxyl functionality is determined by acid-base titration.

**Thermal analysis:**

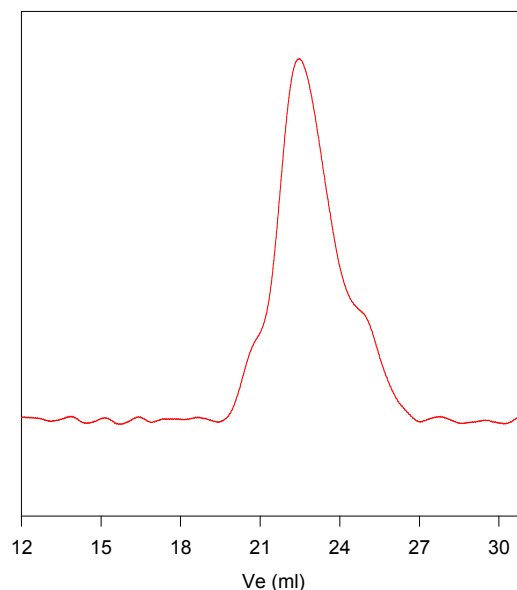
Thermal analysis of the samples was carried out using a differential scanning calorimeter (TA Q100) at a heating rate of 10°C/min. The inflection glass transition temperature ( $T_g$ ) has been considered.

**Solubility:**

Poly(methyl methacrylate) is soluble in THF,  $\text{CHCl}_3$ , toluene and dioxane. The polymer precipitates from hexanes, cold methanol and cold ethanol. The polymer may be soluble in methanol at room temperature depending on its molecular weight.

SEC for the polymer:

**P3873b-iMMA-COOH**



Size exclusion chromatography of poly(methyl methacrylate) (before terminating reaction with  $\text{CO}_2$ ).

— Before terminating with  $\text{CO}_2$   
 $M_n=40000$ ,  $M_w=104000$  PI=2.6, functionality > 90% by titration

**DSC thermogram for the sample:**

