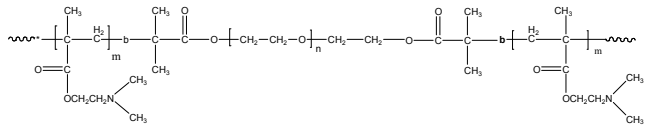


**Sample Name:**

Poly (N, N-dimethylaminoethyl methacrylate-b-ethylene oxide-b-N, N-dimethylaminoethyl methacrylate)

Sample #: P20236D-DMAEMAEO-DMAEMA

**Structure:****Composition:**

Mn x 10 <sup>3</sup>	PDI
15.5-b-2.0-b-15.5	1.7

**Synthesis Procedure:**

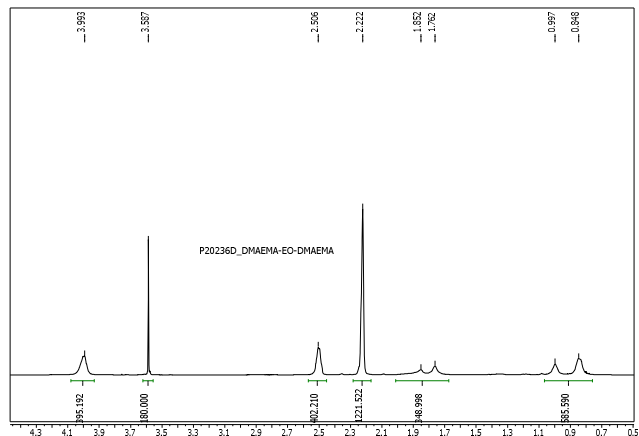
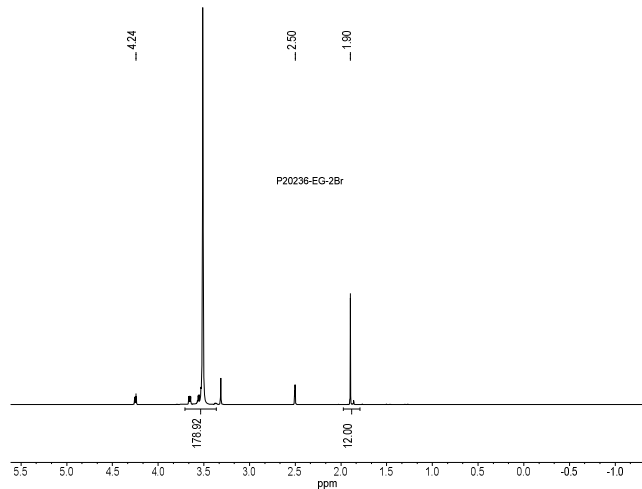
Polymer is obtained by anionic polymerization/  
Controlled radical process.

**Characterization:**

The molecular weight and polydispersity index of this polymer were determined by size exclusion chromatography (SEC) using a Varian liquid chromatograph equipped with a UV and refractive index detector.

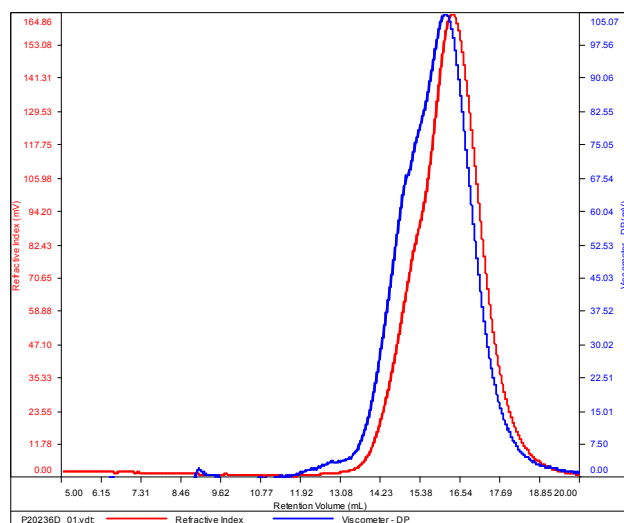
**Solubility:**

The tri-block polymer is soluble in ethanol, methanol, THF, and CHCl<sub>3</sub>.

**EG-2Br macroinitiator****SEC of Sample: run in DMF at 60 oC**

SAMPLE ID: P20236D-DMAEMA-EO-DMAEMA

Conc (mg/mL)	16.5923
dn/dc (mL/g)	0.0650
Method	ps80k-July2015-0000.vcm
Solvent	DMF w 0.03M LiBr
Column	PSS



Sample	Mn	Mw	Mp	Mw/Mn	IV
P20236D_01.vdt	33,598	56,659	43,772	1.686	0.1658