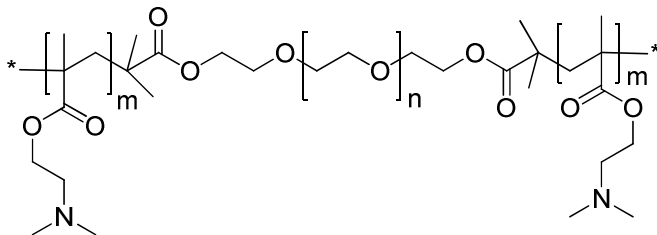


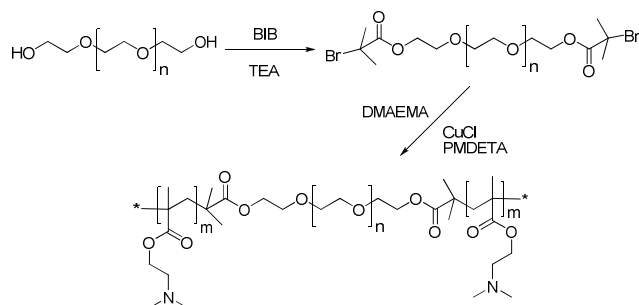
**Sample Name:**

Poly[(2-dimethylaminoethyl) methacrylate-b-ethylene oxide-b-(2-dimethylaminoethyl) methacrylate]

Sample ID: P20236B-DMAEMAEODMAEMA

**Structure:****Composition:**

$M_n \times 10^3$	PDI
DMAEMA-b-EO-b-DMAEMA	
3.0-b-2.0-b-3.0	1.6

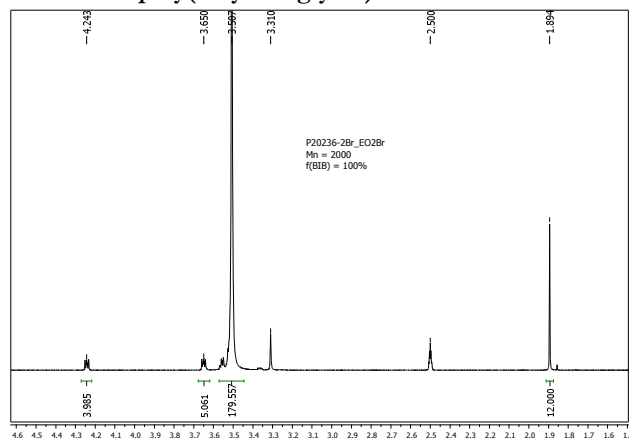
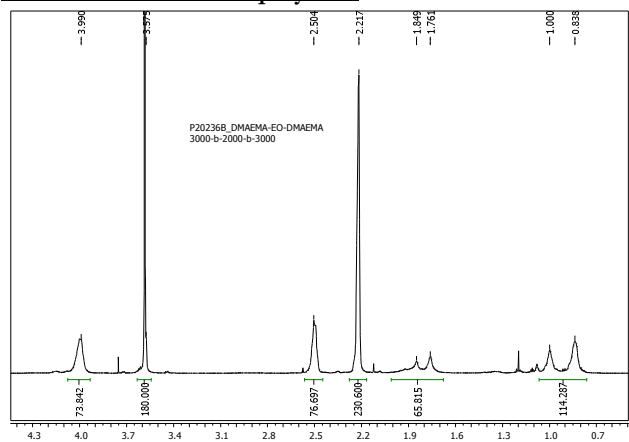
**Synthetic Procedure:****Characterization:**

The molecular weight characterization was performed by  $^1\text{H}$  NMR and size exclusion chromatography (SEC) using refractive index and light-scattering detectors.

**Composition:** Composition of the triblock copolymer was determined by  $^1\text{H}$  NMR.

**Solubility:**

Polymer is soluble in acetone, THF,  $\text{CHCl}_3$ .  
It was precipitated from hexane / ether.

 **$^1\text{H}$  NMR of poly(ethylene glycol) dibromide:** **$^1\text{H}$  NMR of triblock copolymer:****SEC of Sample:**

SAMPLE ID: P20236B-DMAEMAEODMAEMA

Conc (mg/ml)	16.4045
dn/dc (dl/g)	0.0575
Method	ps80k-July2015-0000.vcm
Solvent	DMF w0.03M LiBr
System	System 1

