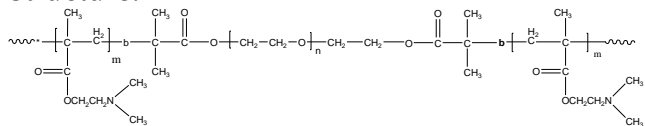


**Sample Name:**

Poly (N, N-dimethylaminoethyl methacrylate-b-ethylene oxide-b-N, N-dimethylaminoethyl methacrylate)

**Sample #:** P20236A-DMAEMAEODMAEMA

**Structure:****Composition:**

Mn x 10 <sup>3</sup>	PDI
1.8-b-2.0-b-1.8	1.3

**Synthesis Procedure:**

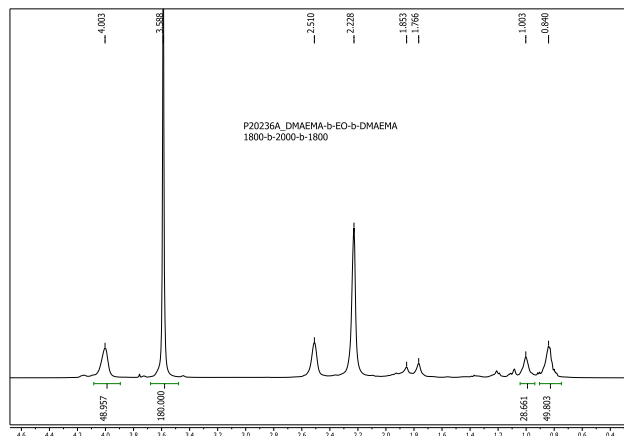
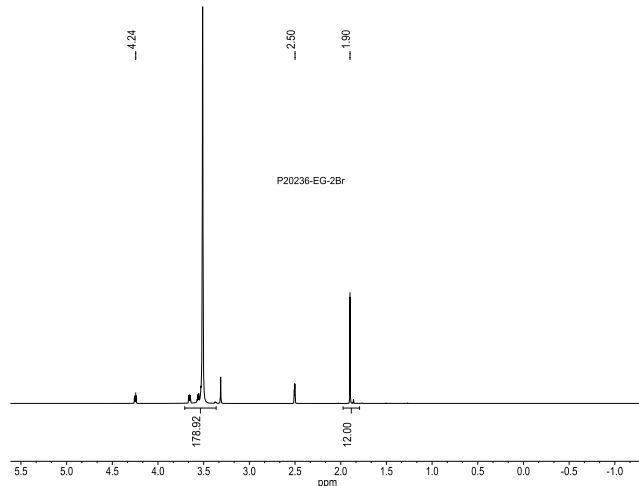
Polymer is obtained by anionic polymerization/  
Controlled radical process.:

**Characterization:**

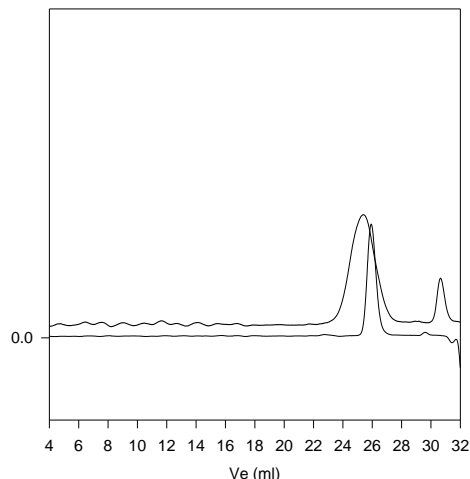
The molecular weight and polydispersity index of this polymer were determined by size exclusion chromatography (SEC) using a Varian liquid chromatograph equipped with a UV and refractive index detector.

**Solubility:**

The tri-block polymer is soluble in ethanol, methanol, THF, and CHCl<sub>3</sub>.

**EG-2Br macro initiator****SEC of Sample:**

**P20236A-DMAEMAEODMAEMA**



Size exclusion chromatography of poly(dimethylaminoethyl methacrylate-b-ethylene oxide-b-dimethylaminoethylmethacrylate):

- Polyethyleneglycol: M<sub>n</sub>=2000, M<sub>w</sub>=2200, PI=1.10
- Block Copolymer DMAEMA-b-EO-b-DMAEMA  
Mn: 1,800-b-2,000-b-1,800, PI=1.3  
(Composition from H NMR)