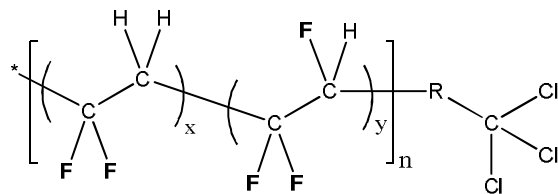


**Sample Name:** Trichloromethyl-terminated poly(vinylidene difluoride-*co*-trifluoroethylene)

**Sample #** P19846-VDFTFEran-CCl3

**Structure:**



R = CFH, CF<sub>2</sub> or CH<sub>2</sub>

**Composition:**

Mn × 10 <sup>3</sup>	Mw/Mn
7.0	1.38
Poly(trifluoroethylene) content:	17 mol%

**Synthesis procedure:**

The polymer was obtained by radical process using CHCl<sub>3</sub> as a chain transfer reagent in emulsion polymerization.

**Characterization:**

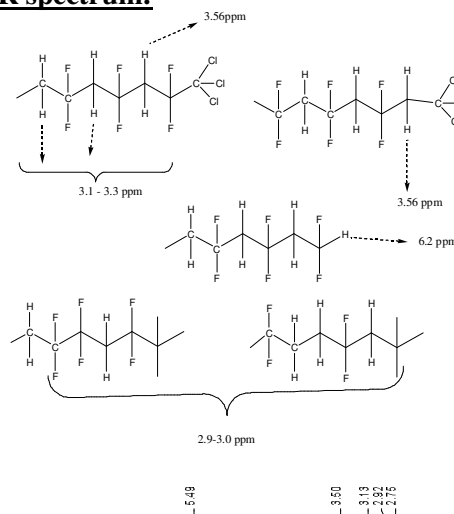
The ratio between VDF and TFE units in the polymer were calculated by <sup>1</sup>H NMR analysis.

The polydispersity index (Mw/Mn) was determined by size exclusion chromatography (SEC) using triple detectors and DMF as an eluent. RI curve on SEC elugram gives negative response due to of low dn/dc values. The molecular weight of the polymer was calculated from <sup>1</sup>H NMR analysis.

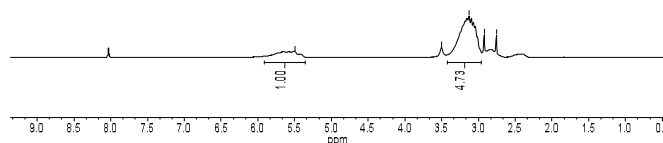
**Solubility:**

The polymer is soluble in dimethylformamide (DMF).

**<sup>1</sup>H NMR spectrum:**

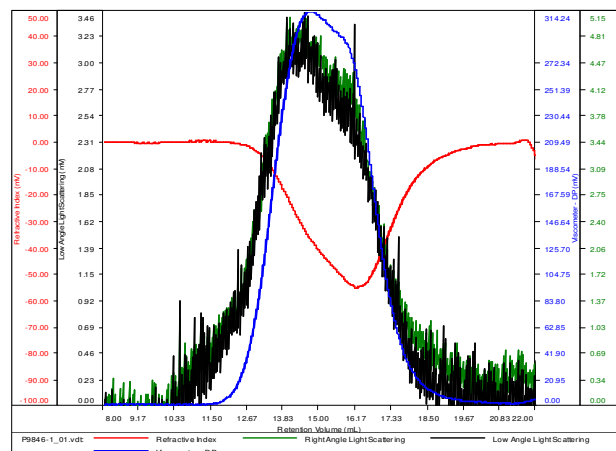


P19846-VDFTFEran



**SEC elugram of the copolymer in DMF:**  
P19846-VDFTFE

Conc (mg/mL)	3.0235
dn/dc (mL/g)	0.2300
Method	PS80k-May-25-2016-0000.vcm
Solvent	DMF w 0.023M LiBr
Column	PSS



Sample	Mn	Mw	Mp	Mw/Mn	IV
P9846-1_01.vdt	6,986	9,692	5,977	1.387	3.9297