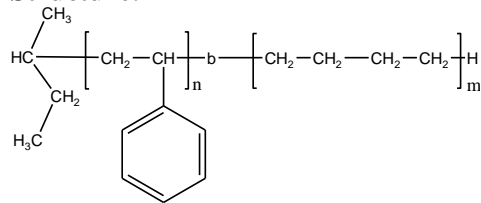


**Sample Name:** Tapered Block Copolymer  
**Poly (styrene-b-ethylene)**

**Sample #:** P19729-SE tapered

**Structure:**



**Composition:**

$M_n \times 10^3$ S-b-Bd (k)	PDI
6.8-b-14.0	1.06

**Synthesis Procedure:**

The polymer was synthesized by anionic polymerization process.

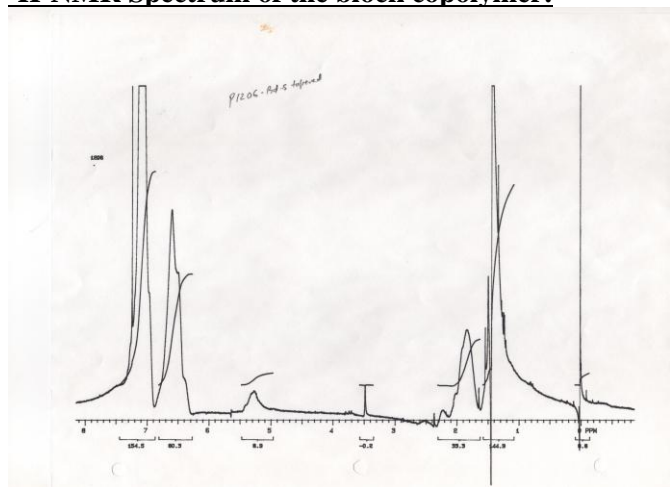
**Characterization:**

The product was characterized by size exclusion Chromatography (SEC) and  $^1\text{H}$  NMR.

**Solubility:**

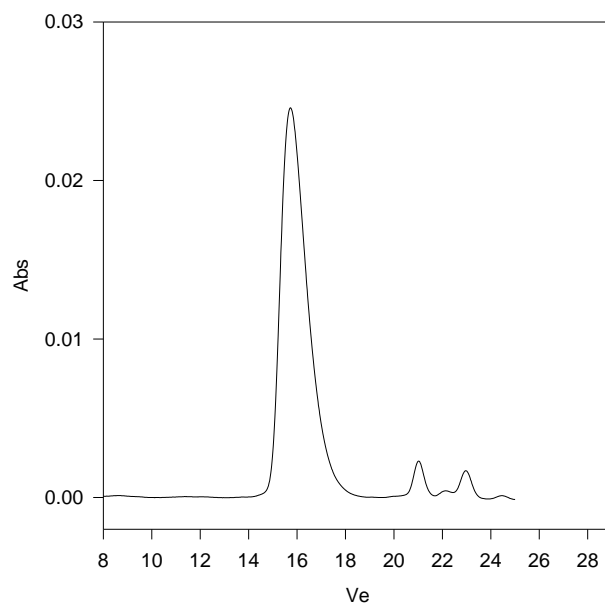
Polymer is soluble in hot toluene and in dichlorobenzene.

**$^1\text{H}$ -NMR Spectrum of the block copolymer:**



**SEC of the block copolymer:**

**P19729-SE tapered**



Size exclusion chromatography of Tapered copolymer of polystyrene-b-polybutadiene  
PSt(6,800)-b-PBd(14,000)  $M_w/M_n$  1.06