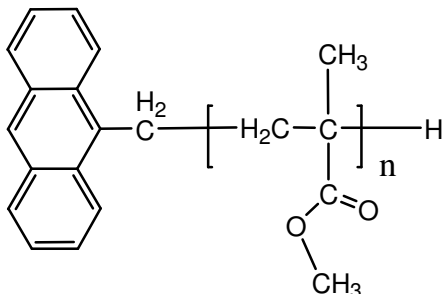


**Sample Name:** Anthracene Terminated  
**Poly(methyl methacrylate)**

**Sample #:** P19704A-MMA-An

**Structure:**

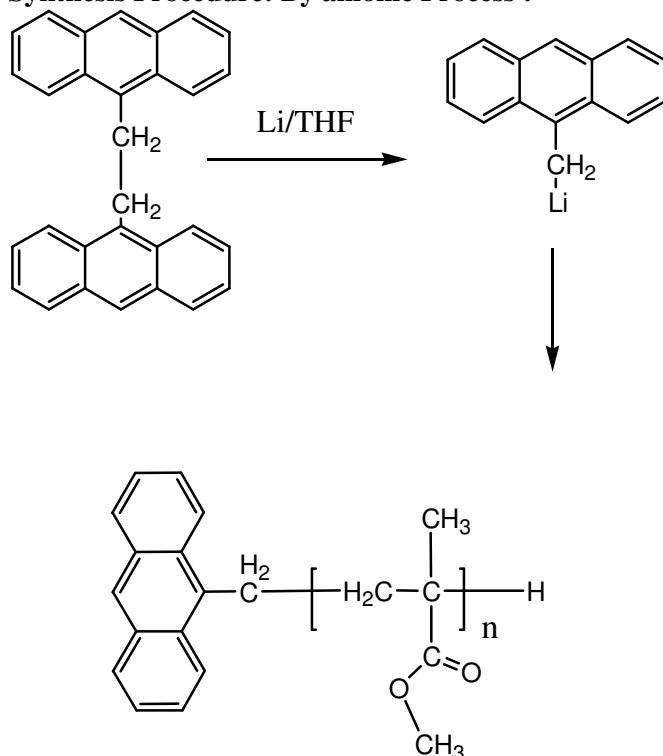


**Composition:**

$M_n \times 10^3$	PDI
14.0	1.3

Microstructure (S:H:I)	
------------------------	--

**Synthesis Procedure: By anionic Process :**



**Characterization:**

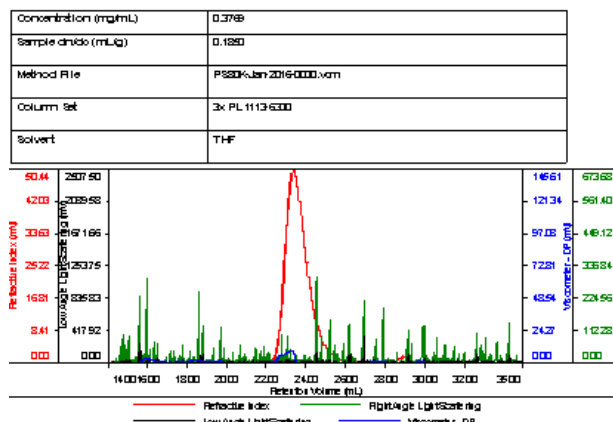
The polymer was characterized by SEC and  $^1\text{H}$  NMR.

**Functionality:** functionality of the obtained polymer was determined by proton NMR.

**Solubility:**

Anthracene terminated PMMA is soluble in DMF, THF, toluene, and  $\text{CHCl}_3$ . It precipitates from methanol, hexane and water.

**SEC elugrame:**



**$^1\text{H}$  NMR spectrum of polymer:**

