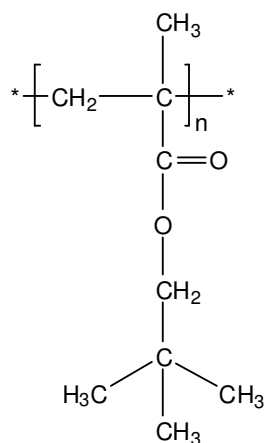


Sample Name: Poly(neopentyl methacrylate)

Sample #: P19503C-NPMA

Structure:



Composition:

$M_n \times 10^3$ (g/mol)	M_w/M_n
169.0	1.8

Synthesis procedure:

Poly(neopentyl methacrylate) was obtained by living anionic polymerization of neopentyl methacrylate.

Characterization:

The molecular weight and polydispersity index (M_w/M_n) of poly(neopentyl methacrylate) were obtained by size exclusion chromatography (SEC).

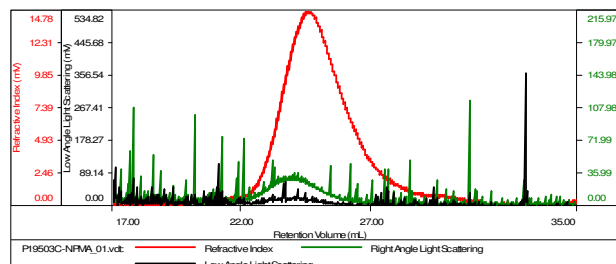
Solubility:

Poly(neopentyl methacrylate) is soluble in THF, chloroform, toluene, and dioxane. The polymer precipitates from hexanes, methanol, and ethanol.

SEC of the homopolymer:

Sample ID: P19503C-NPMA

Concentration (mg/mL)	1.2481
Sample dn/dc (mL/g)	0.0840
Method File	PS80K-April-18-2016-0001.vom
Column Set	3x PL 1113-6300
Solvent	THF



Sample	Mn (Da)	Mw (Da)	Mw/Mn	IV (dL/g)	Ret Vol (mL)	Mp (Da)
P19503C-NPMA	169,156	316,172	1.869	1.0000	24.563	262,102