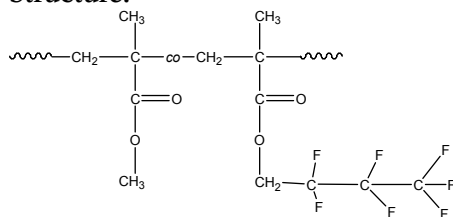


Sample Name:

Random Copolymer Poly (methyl methacrylate-co- Hepta fluoro butyl methacrylate)

Sample #: P19181-MMA7FBuMAran

Structure:



Composition:

Mn x 10 ³ PMMA-co-7FBuMA	PDI
336.0	1.20
T _g of random polymer	102.7
MMA:7FBuMA molar ratio	90:10

Synthesis Procedure:

By GTP process

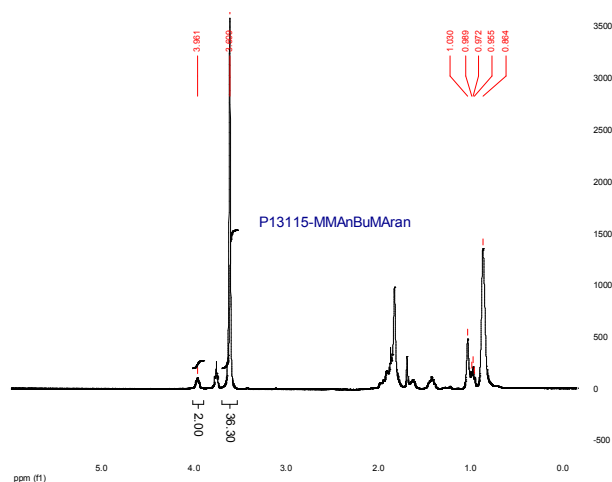
Thermal analysis

Thermal analysis of the samples was carried out on a TA Q100 differential scanning calorimeter at a heating rate of 10°C/min. The midpoint of the slope change of the heat flow plot of the second heating scan was considered as the glass transition temperature (T_g).

Solubility:

The polymer is soluble in CHCl₃, THF,

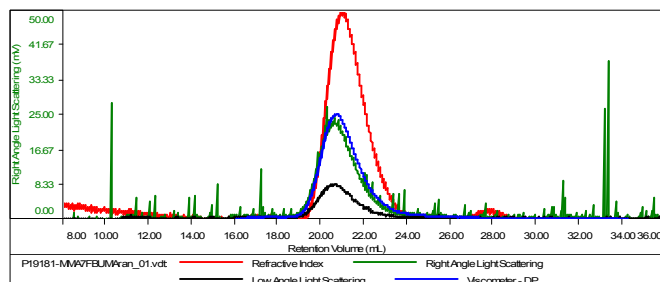
¹H-NMR Spectrum of the random copolymer:



SEC of the random copolymer:

Sample ID: P19181-MMA7FBuMAran

Concentration (mg/mL)	0.3749
Sample dn/dc (mL/g)	0.0800
Method File	PS80K-April29-2015-0000.vcm
Column Set	3x PL 1113-6300
Solvent	THF



Sample	MW Number Average (Da)	MW Weight Average (Da)	MW at Peak (Da)	Polydispersity	Intrinsic Viscosity (dL/g)
P19181-MMA7FBuMAran_01.vdt	336,819	399,478	359,659	1.186	8.1376

Thermogram for the sample:

