

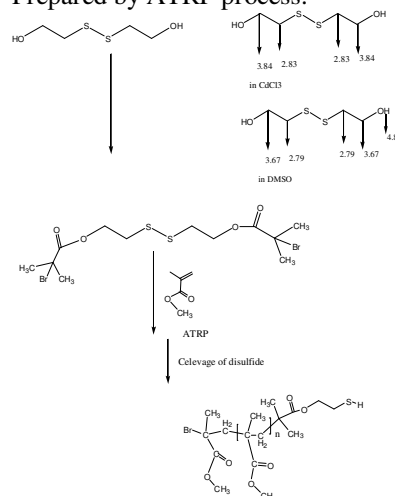
Sample Name:
Thiol Terminated Poly(methyl methacrylate)
Sample #: P19022B-MMASH
Structure:

Composition:

Mn x 10 ³	PDI
6.5	1.25
Syndio:hetero:iso ratio	55:40:5

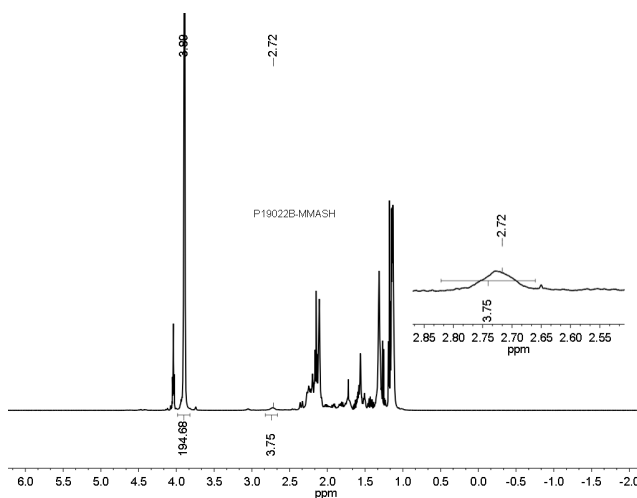
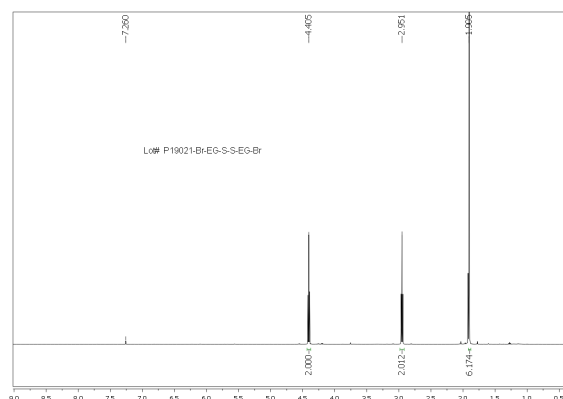
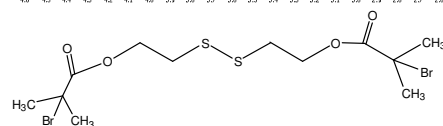
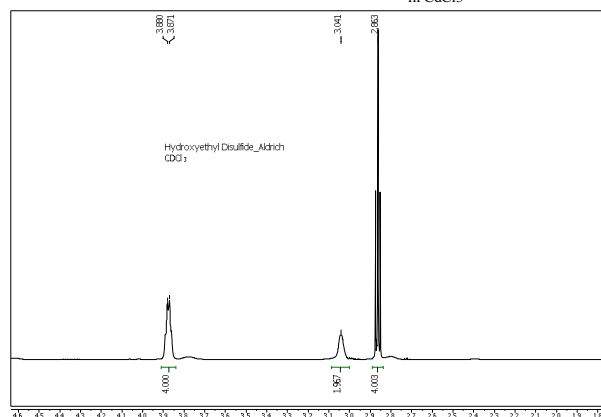
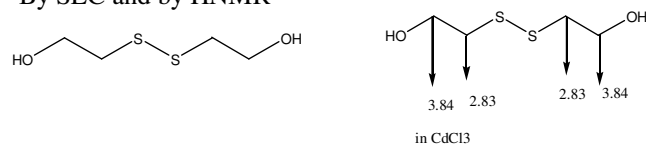
Synthesis Procedure:

Prepared by ATRP process:



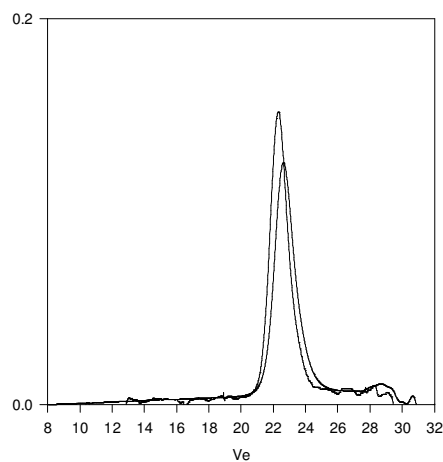
Characterization:

By SEC and by HNMR



SEC of Sample:

P19022B-MMASH



Size Exclusion Chromatography of Thiol end Poly(methyl methacrylate):

1. Disulfide stage: $M_n = 13,000$, $M_w = 16,500$, $M_w/M_n = 1.25$
2. After Cleavage of disulfide link:
 $M_n 6,500$, $M_w 8,300$ $M_w/M_n 1.25$

SH Functionality >98%