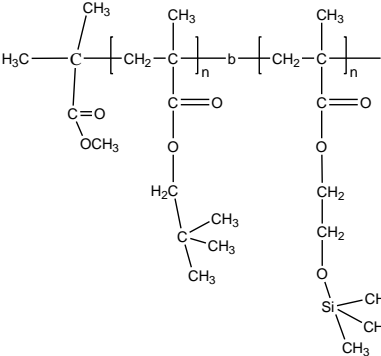


Sample Name: Poly (Neopentyl methacrylate-b- 2-Trimethyl siloxy ethyl methacrylate)

Sample #: P18927-NPMAHEMATMS

Structure:



Composition:

Mn × 10 <sup>3</sup> NPMA-b-HEMA-TMS	PDI
18.0-b-9.0	1.2
T <sub>g</sub> for NPMA block:	119°C

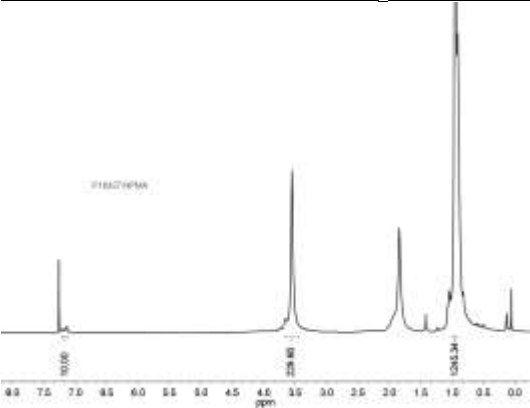
Synthesis Procedure:

The polymer was synthesized by anionic polymerization process.

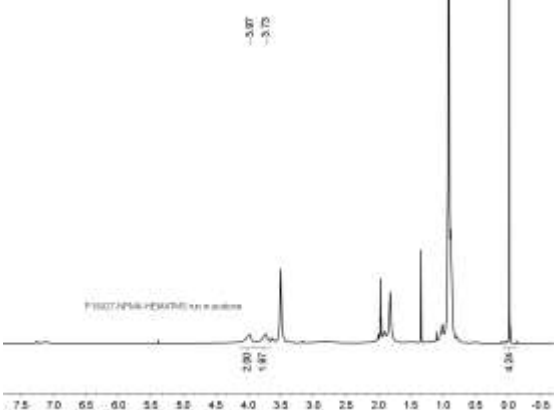
Characterization:

The product was characterized by size exclusion chromatography (SEC) and <sup>1</sup>H NMR.

<sup>1</sup>H NMR (500 MHz, acetone-d<sub>6</sub>) of NPMA:



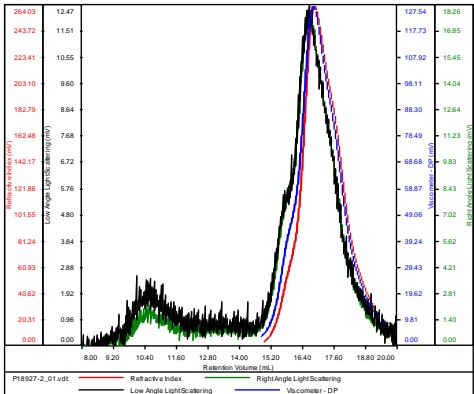
<sup>1</sup>H NMR (500 MHz, acetone-d<sub>6</sub>) of NPMA-HEMATMS:



SEC of the block copolymer runs in DMF:

SAMPLE ID: P18927-2

Conc (mg/mL)	21.9767
dn/dc (mL/g)	0.0650
Method	PS80K-17SEP2014-0000.vcm
Solvent	DMF w 0.03M LiBr
Column	PSS

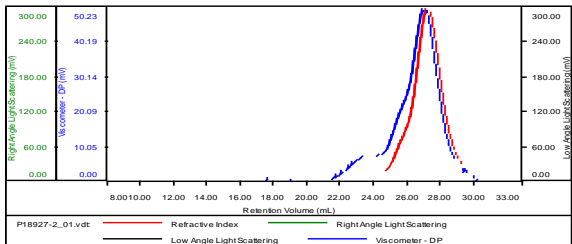


Sample	Mn	Mw	Mp	Mw/Mn	IV
P18927-2_01.vdt	27,998	32,531	28,691	1.162	0.1206

SEC of the block copolymer runs in THF:

Sample ID: P18927-NPMA-HEMATMS

Concentration (mg/mL)	2.3283
Sample dn/dc (mL/g)	0.0840
Method File	PS80K-1020-2014-0000.vcm
Column Set	3x PL 1113-6300
Solvent	THF



Sample	MW Number Average (Da)	MW Weight Average (Da)	MW at Peak (Da)	Polydispersity	Intrinsic Viscosity (dL/g)
P18927-2_01.vdt	26,630	32,438	25,541	1.218	1.1341