

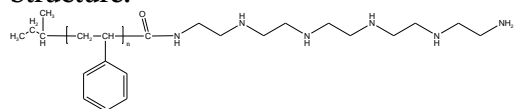
Sample Name:

Pentaethyl Hexamine Terminated Polystyrene

Sample #: P18891A-SPEHA-Dialysed polymer

Against water

Structure:

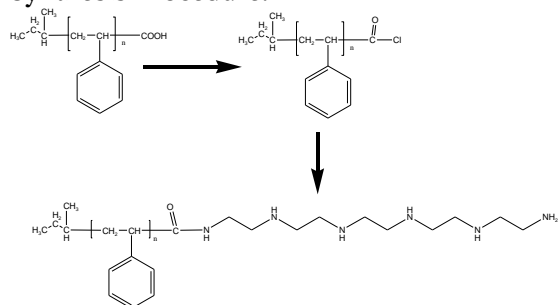


Composition:

Mn x 10 ³	PDI
2.3	1.08 (COOH) (1.3)
Functionality %	>96%
Dimer	> 5%

The dimer structure shows two polystyrene chains linked by a hexamine group. The structure is labeled with 'H₃C' and 'CH₃' at the ends of the hexamine chain.

Synthesis Procedure:



Characterization:

BY GPC , HNMR and FTIR

Solubility:

Polymer is soluble in toluene, THF, CHCl_3 and can be precipitated in water and cold methanol.

H NMR:

