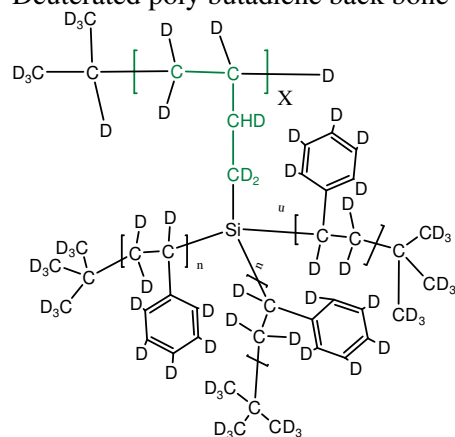


**Sample Name: Complete Deuterated Graft or star like Polystyrene (d8)**

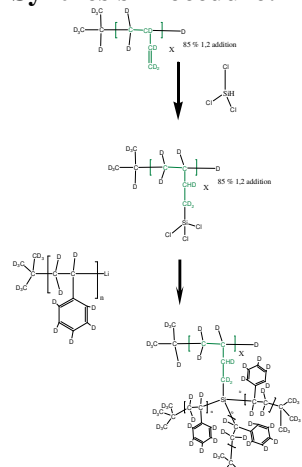
**Sample # P18835-17dPS**

17- arms grafted Deuterated Poly styrene on Deuterated poly butadiene back bone



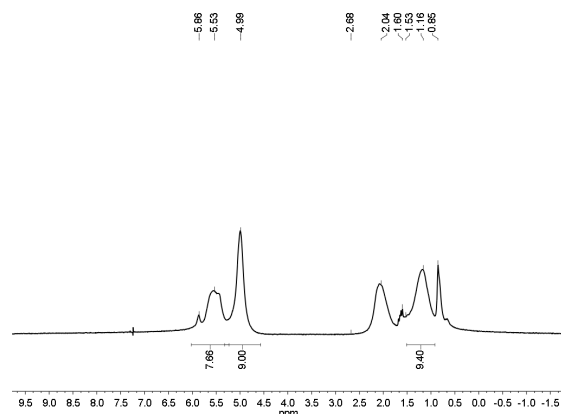
Mn x 10 <sup>3</sup> (total)	PDI
15.5	1.4
Mn of each arm: (0.9)	

**Synthesis Procedure:**



Linker : Lot# P18818: pentamer

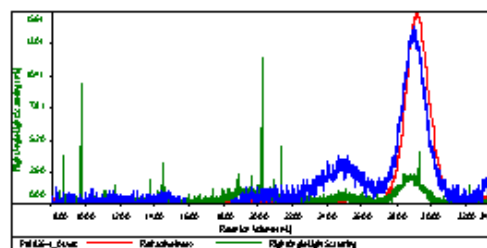
**<sup>1</sup>H NMR:**



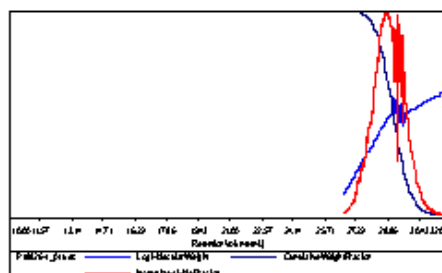
**SEC of the deuterated Polystyrene branch**

**Sample ID:** branch

Concentration (mg/mL)	4.3284
Sample dilution (x)	0.1250
Method File	PSS200-angel 5x2014-0000.vcm
Column Set	Styrag PL 1115/5000
Solvent	THF

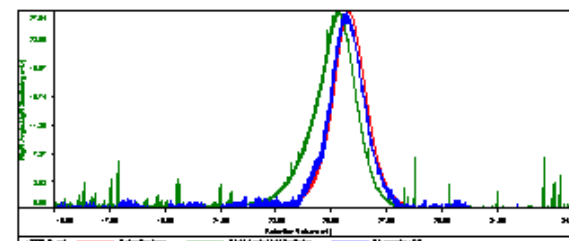


Sample	FW	FN	FS	FW/FN	TV
	26.1	228	1.021	1.112	0.0257



**Sample ID: P18835-dPS Star**

Concentration (mg/mL)	0.690
Sample dn/dc (mL/g)	0.189
Method File	PSS200-angel 5x2014-0000.vcm
Column Set	Styrag PL 1115/5000
Solvent	THF



Sample	Mn	Mw	Mp	Mw/Mn	TV
P18835_d1.d1	15.932	22.725	15.745	1.425	0.2303

