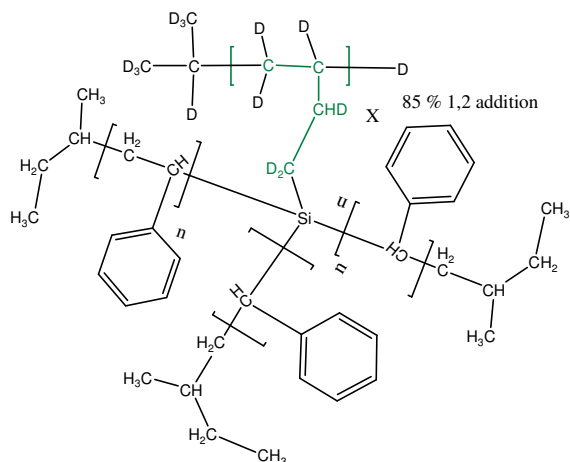


Sample Name:

Protonated Multiarm Polystyrene With Deuterated Core

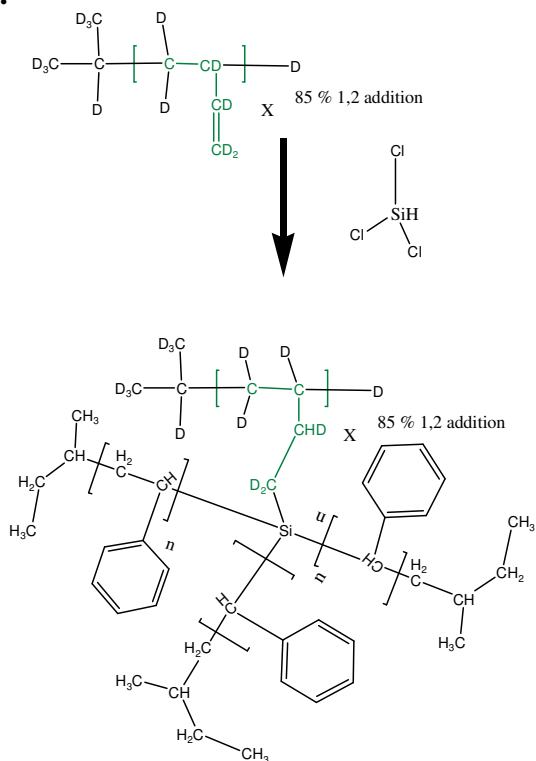
Sample # **P18826-20S**

20-arm Polystyrene

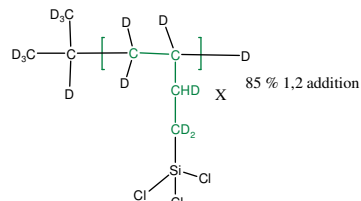


$M_n \times 10^3$ of one arm (g/mol)	Total $M_n \times 10^3$ (g/mol)	PDI
0.8	16.0	1.25

Synthesis:



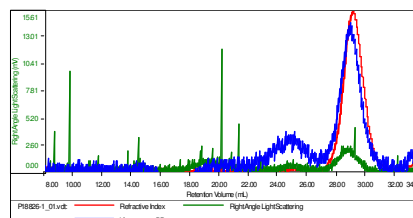
Linker (core): Lot# P18818.



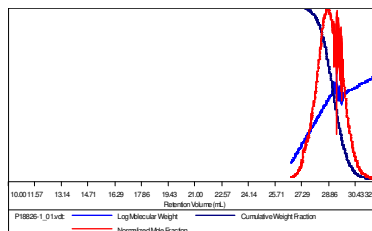
SEC elugram of the PS arm:

Sample ID: P18826-Ps branch

Concentration (mg/mL)	4.8241
Sample chn: (nL/g)	0.1850
Method File	PS80K.august 5-2014-0000.vcm
Column Set	3x PL 1113-6300
Solvent	THF



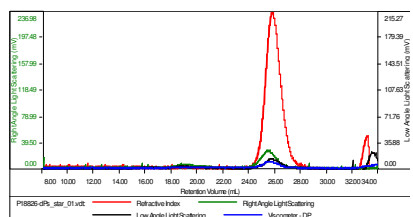
Sample	Mh	Mw	Mp	Mw/Mh	IV
P18826-1_01.vcl	841	935	1,091	1.113	0.0357



SEC elugram of the multiarm PS:

Sample ID: P18826-S Star

Concentration (mg/mL)	4.1123
Sample chn: (nL/g)	0.1850
Method File	PS80K.august 5-2014-0000.vcm
Column Set	3x PL 1113-6300
Solvent	THF



Sample	Mh	Mw	Mp	Mw/Mh	IV
P18826-dPs_star_01.vcl	15,882	20,017	16,665	1.260	0.0573

