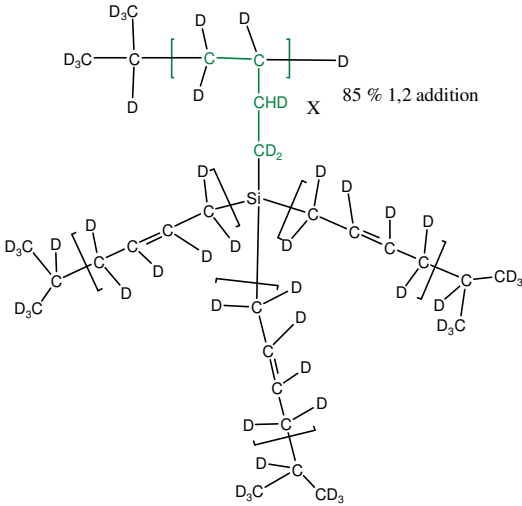


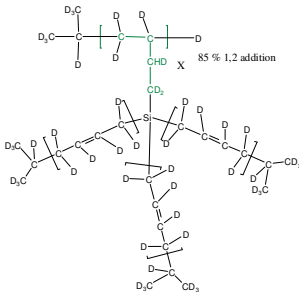
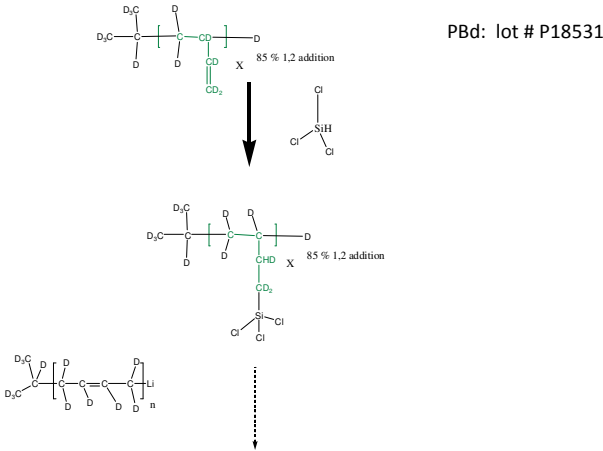
Sample Name:  
**Completely Deuterated Multiarm PolyButadiene**

Sample # P18535-100dBd  
**100-arm deuterated 1,4-polybutadiene**



$M_n$ of arm (g/mol)	Total $M_n$ (g/mol)	$M_w/M_n$
1,200	122,000	1.1

**Synthesis:**

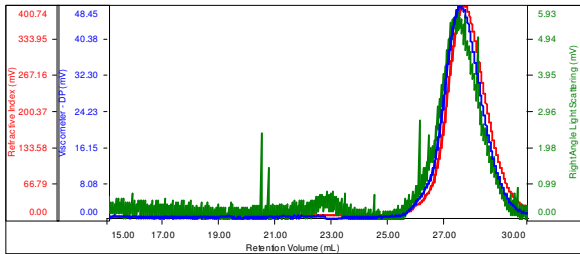


**Characterization:**

SEC elugram of polybutadiene (arm):

**Sample ID: P18535-Bd Branch**

Concentration (mg/mL)	31.2137
Sample dn/dc (mL/g)	0.1270
Method File	PS80K-March7-2014-0000.vcm
Column Set	3x PL 1113-6300
System	System 1

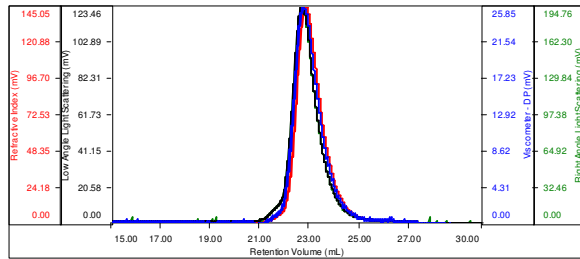


Sample	$M_n$	$M_w$	$M_p$	$M_w/M_n$	IV
P18535-dBd_branch_01.vdt	1,230	1,462	1,259	1.189	0.0584

SEC elugram of multi-arm polybutadiene:

**Sample ID: P18535-dBD Star**

Concentration (mg/mL)	7.9623
Sample dn/dc (mL/g)	0.1270
Method File	PS80K-March7-2014-0000.vcm
Column Set	3x PL 1113-6300
System	System 1



Sample	$M_n$	$M_w$	$M_p$	$M_w/M_n$	IV
P18535-dBd_star_01.vdt	122,714	135,612	133,137	1.105	0.0891