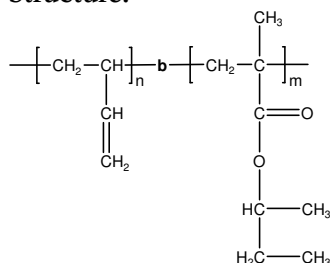


Sample Name: Poly(1,2-butadiene-b-s-butyl methacrylate)

Sample #: P18499-BdsBuMA

Structure:

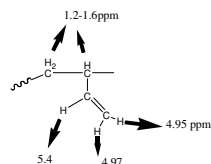
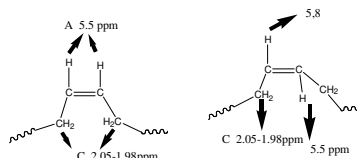
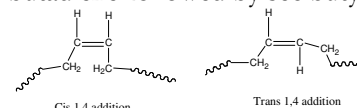


Composition:

| | |
|------------------------------------|--------------------------------------|
| Mn x 10 ³ Bd-b-sBuMA | Mw/Mn (PDI) |
| 60.0-b-580.0 | 1.25 |
| T _g for Bd block: -11°C | T _g for sBuMA block: 74°C |

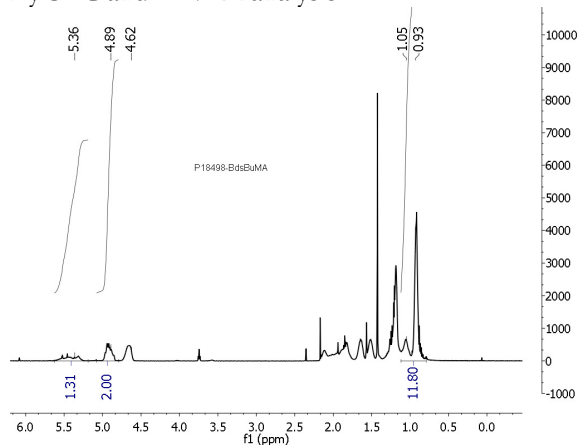
Synthesis Procedure:

Poly(1,2-butadiene-b-s-butyl methacrylate) is prepared by living anionic polymerization with sequence addition of butadiene followed by sec butyl methacrylate.



Characterization:

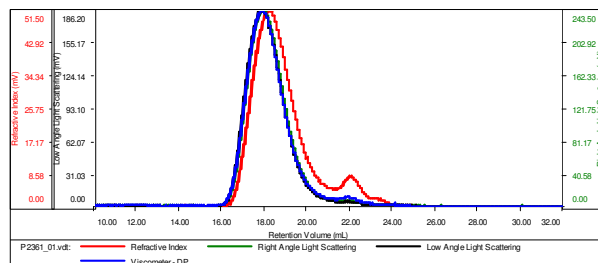
By SEC and HNMR analysis:



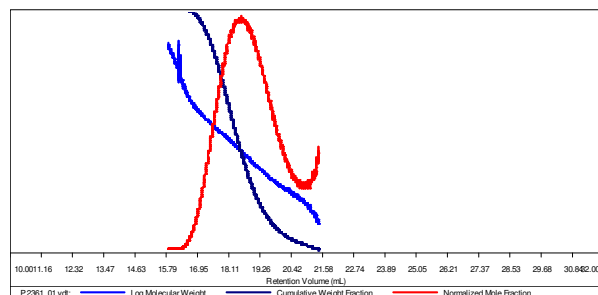
SEC profile of the block copolymer

Sample ID: P18499-BdSec BuMA

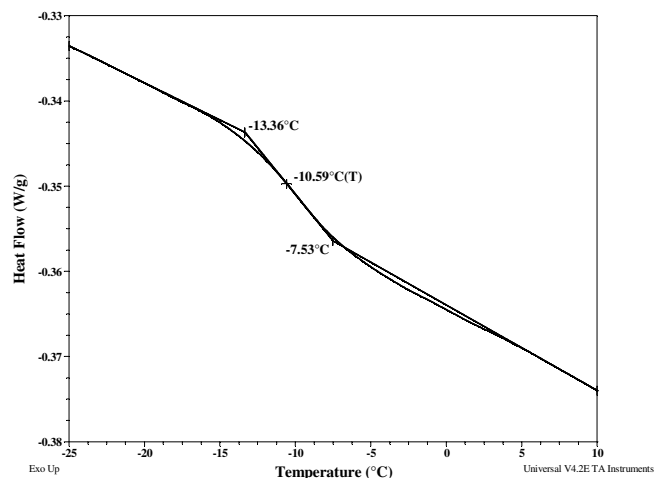
| | |
|-----------------------|---------------------------|
| Concentration (mg/mL) | 3.8034 |
| Sample dn/dc (mL/g) | 0.0880 |
| Method File | PS80K-Feb10-2014-0000.vcm |
| Column Set | 3x PL 1113-6300 |
| System | System 1 |



| Sample | Mn | Mw | Mp | Mw/Mn | IV |
|--------------|---------|---------|---------|-------|--------|
| P2361_01.vdt | 640,238 | 791,439 | 827,363 | 1.236 | 3.4920 |



DSC thermogram for Bd block:



DSC thermogram for sBuMA block:

