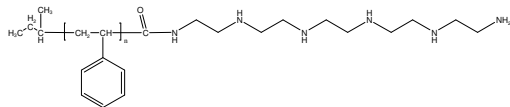


Sample Name:

**Pentaethyl Hexamine Terminated
Polystyrene-Dialysed form**

Sample #: **P18049AP-SPEHA**

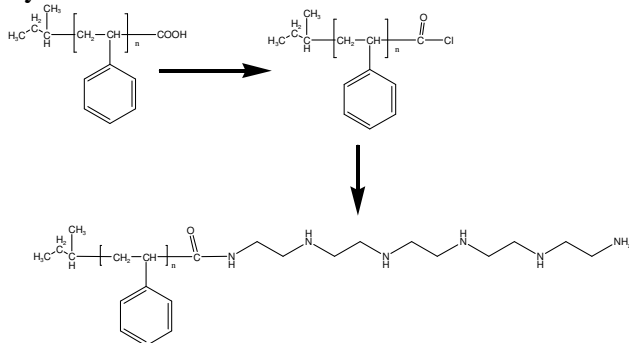
Structure:



Composition:

Mn x 10 ³	PDI
5.3	1.04
Functionality %	>98%

Synthesis Procedure:



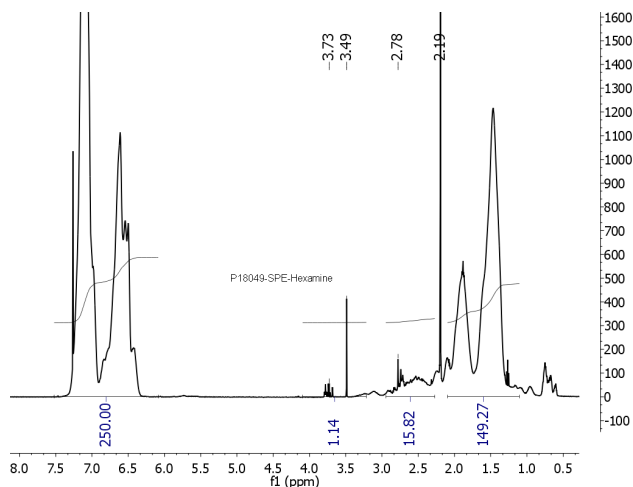
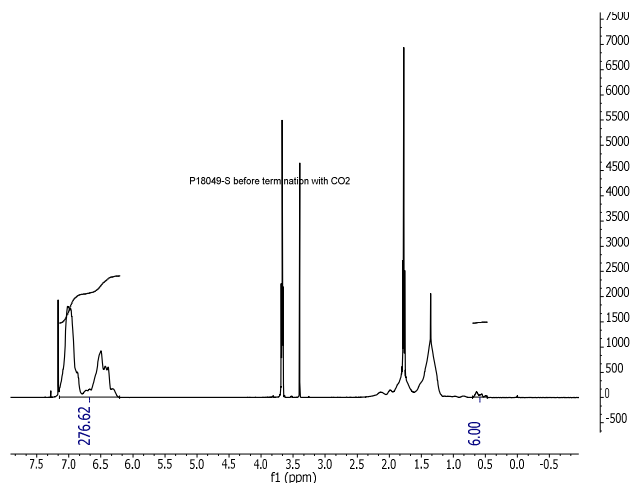
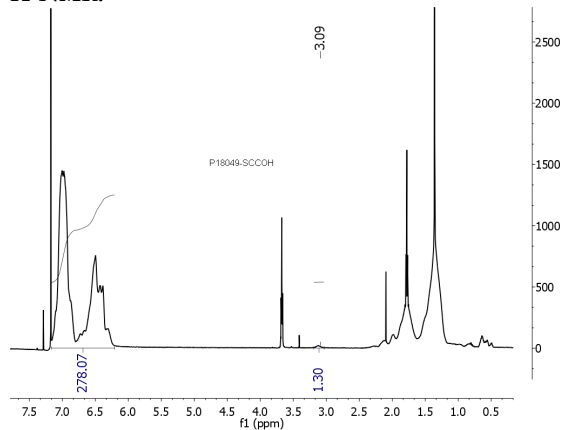
Characterization:

The molecular weight and polydispersity index of this polymer were determined before addition of the CO₂H function, by size exclusion chromatography (SEC) using a Varian liquid chromatograph equipped with a UV and refractive index detector. Polymer functionality was determined by titration with NaOH using phenolphthalein as the indicator.

Solubility:

Polymer is soluble in toluene, THF, CHCl₃ and can be precipitated in water and cold methanol.

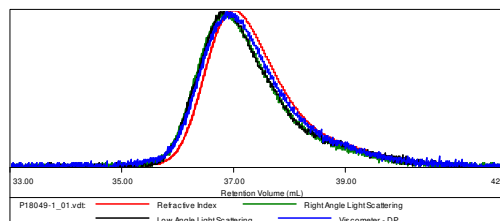
H-NMR:



SEC of Sample:

Sample ID: P18049-1SCCOH

Concentration (mg/mL)	3.0309
Sample dn/dc (mL/g)	0.1850
Method File	PS80K-May-2013-0000.vcm
Column Set	3x PL 1113-6300
System	System 1



Sample	Mn	Mw	Mp	Mw/Mn	IV
P18049-1_01.vdt	5,332	5,551	5,385	1.041	0.1638

