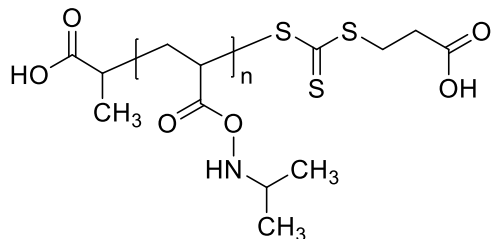


**Sample Name:** Poly(N-isopropylacrylamide), RAFT-agent terminated

**Sample #:** P16035-NIPAM-RAFT macroinitiator

**Structure:**



**Composition:**

Mn x 10 <sup>3</sup>	PDI
4.0	1.4

**Synthesis Procedure:**

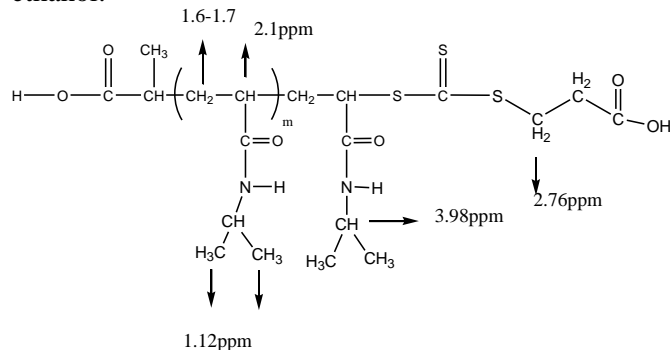
The poly(N-isopropylacrylamide) was prepared by RAFT controlled process.

**Characterization:**

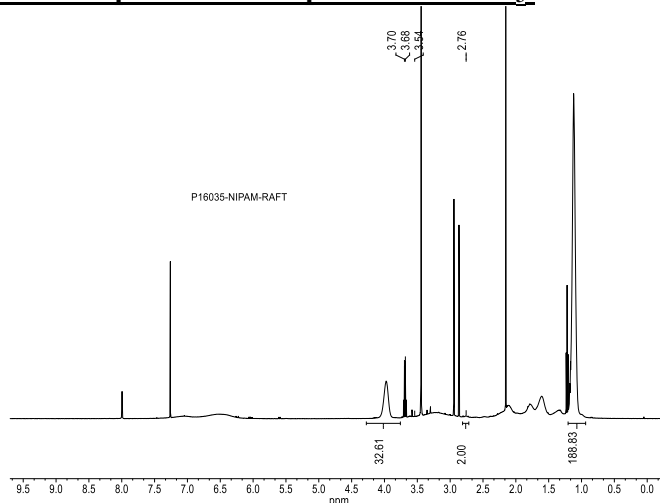
The molecular weight and polydispersity index (PDI) are obtained by size exclusion chromatography (SEC) in DMF. SEC analysis was performed on a Varian liquid chromatograph equipped with refractive and light scattering detectors.

**Solubility:**

Poly(N-isopropylacrylamide) is soluble in methanol, ethanol.



**<sup>1</sup>H NMR spectrum of the product in CDCl<sub>3</sub>:**



**SEC elugram of the polymer:**

