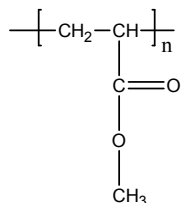


Sample Name: **Poly(methyl acrylate)**

Sample #: **P14094-MA**

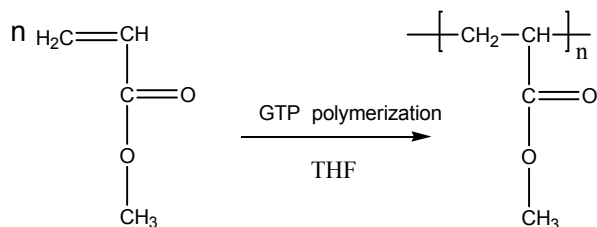
Structure:



Composition:

Mn x 10 ³	PDI
8.0	1.6

Synthesis Procedure:



Characterization:

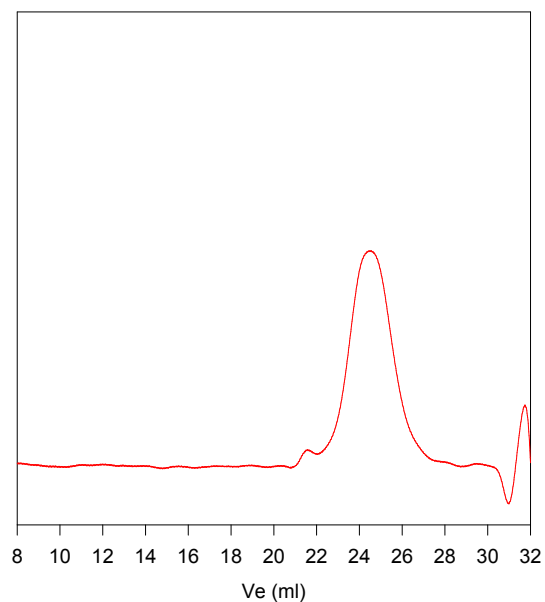
The molecular weight and polydispersity index (PDI) are obtained by size exclusion chromatography (SEC) in THF. SEC analysis was performed on a Varian liquid chromatograph equipped with refractive and UV light scattering detectors. Three SEC columns from Supelco (G6000-4000-2000 HXL) were used with triple detectors from Viscotek Co.

Solubility:

Poly(methyl acrylate) is soluble in THF, hexanes (low MW), toluene and CHCl₃. This polymer precipitates from ethanol and methanol containing 10-15% water.

SEC of Sample:

P14094-MA



Size Exclusion Chromatography of Poly(Methyl acrylate)

$M_n=8000$, $M_w=12800$, $M_w/M_n=1.6$