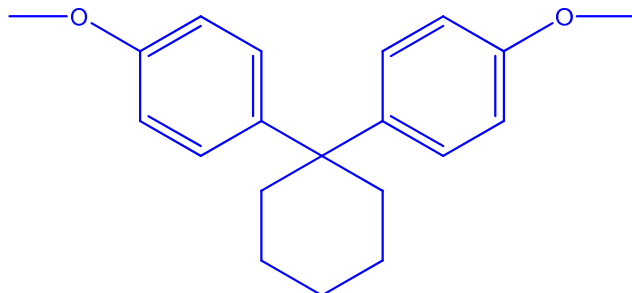


**Sample Name:****1,1-Bis(4-methoxyphenyl)cyclohexane****Sample #: OR403-BMCyH****Structure:****Composition:**

MW	Purity
296.40	Over 98%
T <sub>g</sub> (°C)	-27

**Synthesis Procedure:**

The product was prepared from 4, 4'-cyclohexylidenebisphenol etherification according to available literature.

**Characterization:**

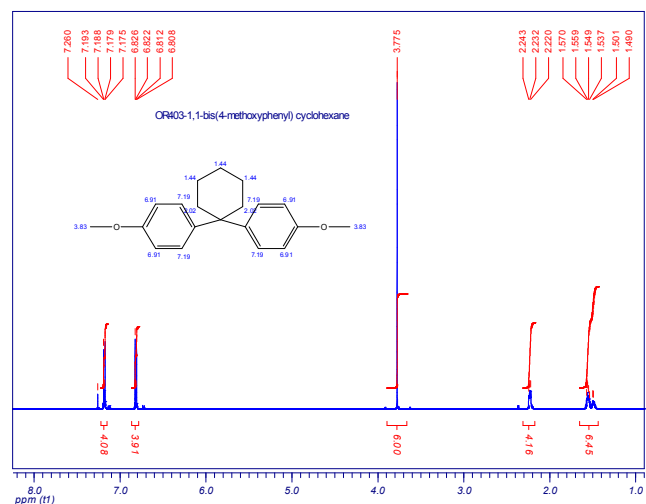
The proton NMR was recorded in deuterated chloroform.

**Thermal analysis**

Thermal analysis of the samples was carried out on a TA Q100 differential scanning calorimeter at a heating rate of 10°C/min. The midpoint of the slope change of the heat flow plot of the second heating scan was considered as the glass transition temperature (T<sub>g</sub>).

**Solubility:**

The product is soluble in chloroform, benzene, toluene, acetone and THF. It is insoluble in water and has limited solubility in methanol.

**NMR of the sample:****DSC thermogram for the monomer:**