

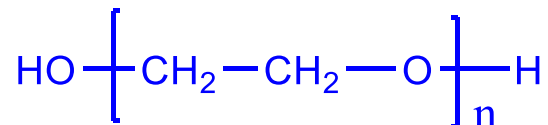
Product Profile

Identification

Product Name: Poly ethylene glycol or Poly ethylene oxide

Product Lot Number: P4223D-EG2OH

Product Chemical Architecture:



Composition:

Mn(g/mole)	108,000
MW (g/mole)	152,000
MW/Mn	1.4

Method of Synthesis;

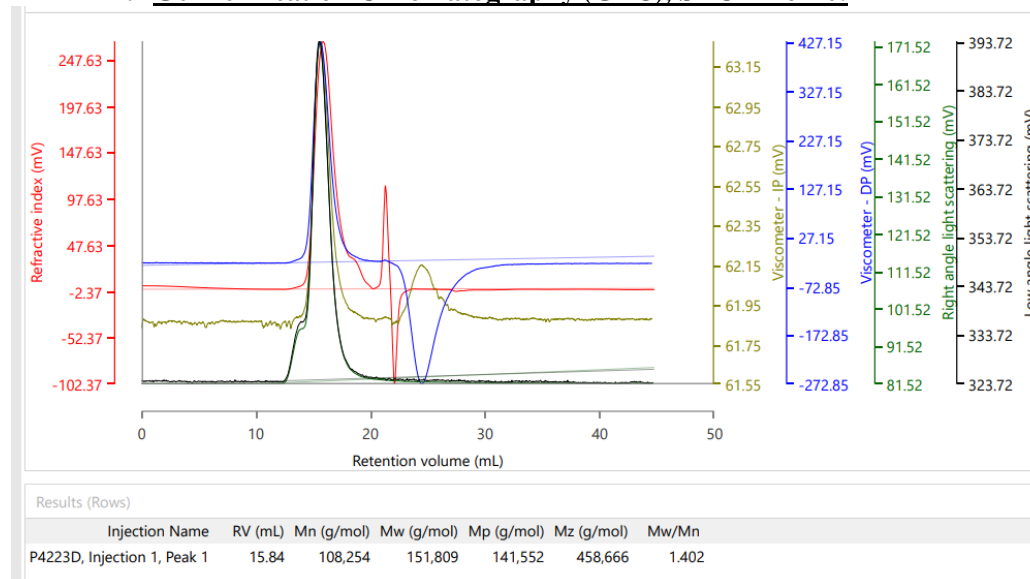
By anionic Polymerization

Solubility in different solvents

THF	√	DMF	√
Alcohol	√	CHCl ₃	√
Toluene	X	DMSO	√

Validation of Architecture

A. Gel Permeation Chromatography (GPC), SEC- Profile:



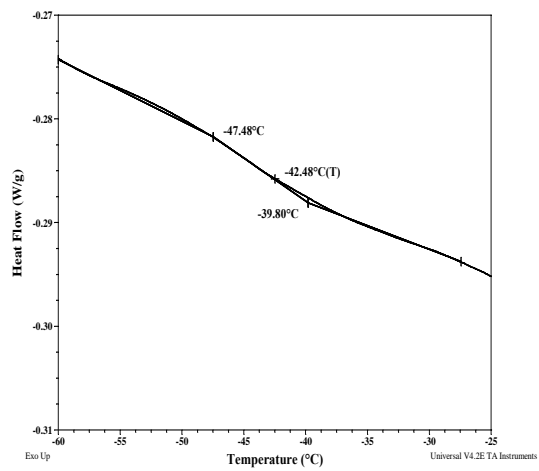
B. Melting and crystallization curve for the sample

C. The melting temperature (T_m) was taken as the maximum of the endothermic peak where as the crystallization temperature (T_c) was considered as the minimum of the exothermic peak.

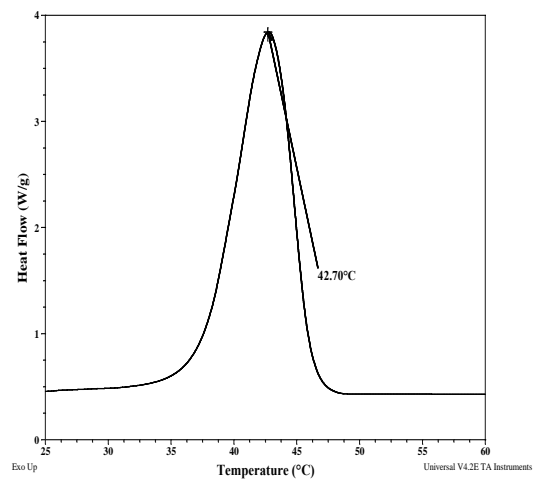
D. Thermal analysis results at a glance

Sample	T_m (°C)	T_c (°C)	T_g (°C)
EO	66	43	-43

Thermogram for EO:



Crystallization curve for the sample:



Melting curve for the sample:

