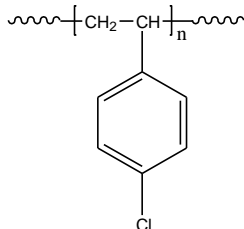


Sample Name: Poly(4-chloro styrene)

Sample #: P43462BB-4CIS

**Structure:**



**Composition:**

$M_n \times 10^3$	PDI
34.0	1.2

**Synthesis Procedure:**

Poly(4-chloro styrene) is synthesized by anionic polymerization process. Monomer dilution with 30:70 by Toluene  
Additive LiCl ;  $\alpha$ -MeS; SecBuLi system  
LiCl/I= 5 molar ratio

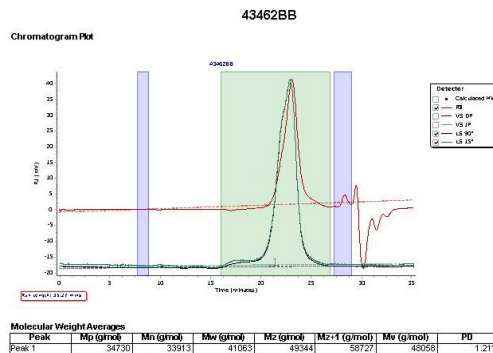
**Characterization:**

The molecular weight and polydispersity index (PDI) are obtained by size exclusion chromatography (SEC).

**Solubility:**

Poly(4-chloro styrene) is soluble in DMF, THF, toluene and  $CHCl_3$ . It precipitates from methanol, ethanol, water, and hexanes.

**SEC elugram of Homopolymer:**



f