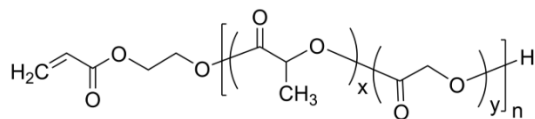


**Sample Name:** Poly(DL-lactide-co-glycolide),  $\alpha$ -acryloxy-terminated

**Sample #:** P43377-DLLAGly-Acrylate

**Structure:**



**Composition:**

$M_n \times 10^3$	PDI
3.8	1.3

DLLA: Glycolide Molar ratio 52:48

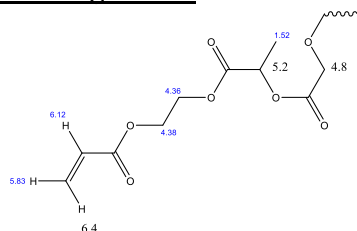
**Synthetic Procedure:**

The product was synthesized by using 2-Hydroxy ethyl acrylate initiator and Sn Octoate catalyst.

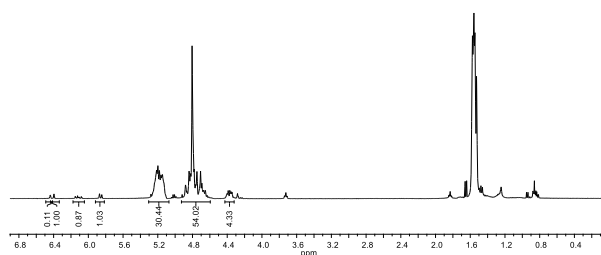
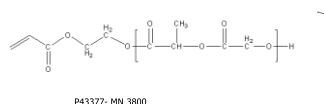
**Characterization:**

The product was characterized by size exclusion chromatography (SEC) and  $^1\text{H}$  NMR data analysis.

**Chemical shifts assignments**



**$^1\text{H}$  NMR spectrum of Random copolymer bearing acryloyl moieties:**



**SEC profile of the polymer:**

**Workspace Details**

Workspace name

Location

Comments

Created by

Calibration 2020-05-25

D:\GPC\Workspaces\Calibration 2020-05-25\

Created by

agilent2 at 10:50:19 AM on May 25, 2020

**Chromatogram Plot**

