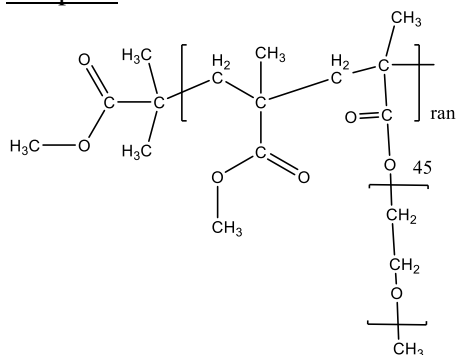


Sample Name:

POLY(METHYL METHACRYLATE)-GRAFT-POLY(ETHYLENE OXIDE)

Sample#: **P42989-MMAEOMArAn**



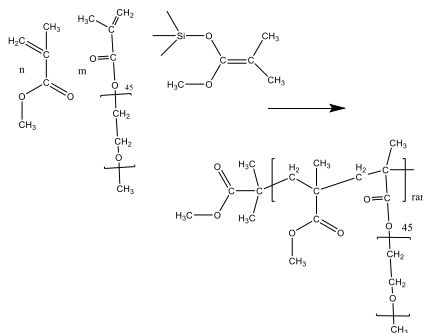
Composition:

Mn x 10 ³ Total	PDI
52.0	1.14
With 88 mole % of MMA	12 mole% of EOMA (MW of EOMA=2000)

One chain of polymer consists of 330 units of MMA & 12 units of PEO methacrylate.

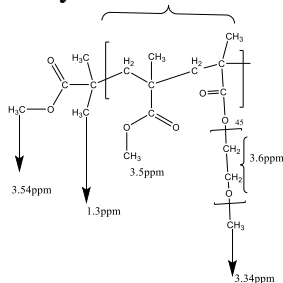
Synthesis Procedure:

The polymer was prepared by group-transfer polymerization of MMA and PEO with methacrylate terminated macromonomer.



Characterization:

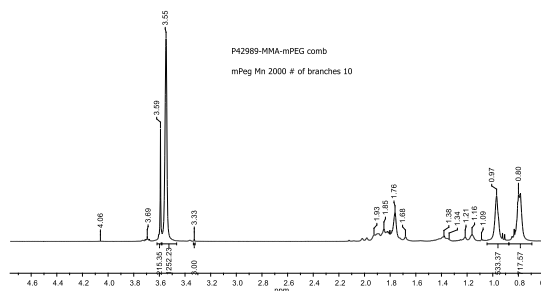
The product was characterized by size exclusion chromatography (SEC) and ¹H NMR data analysis.



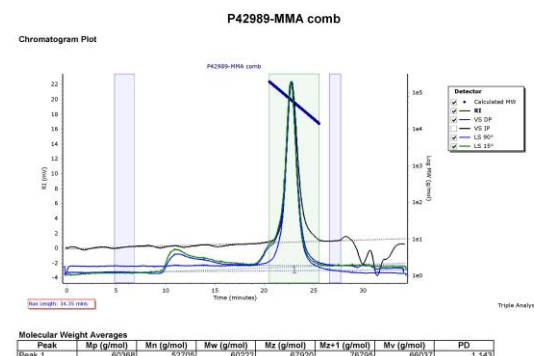
Solubility:

The polymer is soluble in THF, CHCl₃, acetone and precipitates from hexane and ether depend on the composition.

¹H-NMR spectrum of polymer:



SEC elugram of polymer:



Thermal analysis of the sample:

Thermal analysis was carried out on a TA Q100 differential scanning calorimeter at a heating rate of 10°C/min. The glass transition temperature (T_g) of the polymer was found to be -45°C.

