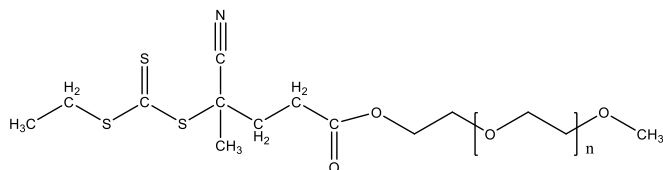


Sample Name: α -Methoxy- ω -ethyl [4-Cyano-4-(ethylcarbonothioylthio)pentanoic ester-terminated Poly (ethylene oxide)

Sample #: P42826-mPEG-RAFT

Structure:



Composition:

$M_n \times 10^3$	2.0
PDI	1.13
RAFT functionality (by NMR)	>90%

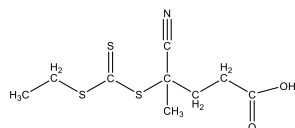
Solubility:

Poly (ethylene oxide) is soluble in toluene, CHCl_3 , Acetone, THF and water. It is Insoluble in ether, hexane and Precipitated from DCM or CHCl_3 into ether.

Characterization:

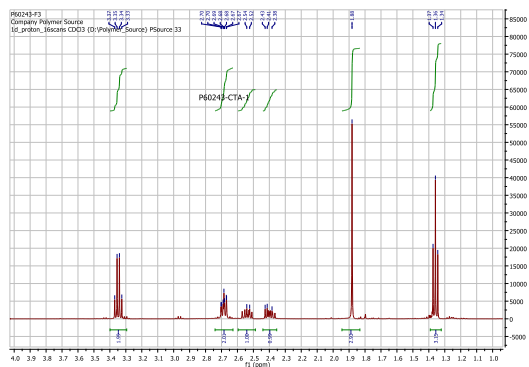
PEO bearing RAFT functionality was characterized by NMR.

Lot#: P60243

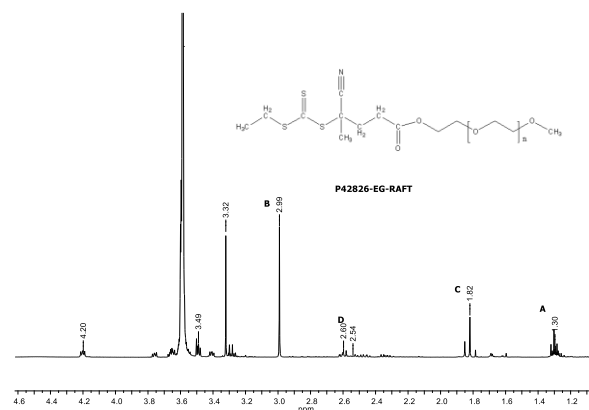


Molecular formula	$\text{C}_9\text{H}_{13}\text{NO}_2\text{S}_3$
Molecular weight	263.0
Purity:	+98 %

$^1\text{H-NMR}$ (400 MHz, CDCl_3) spectrum of the RAFT:

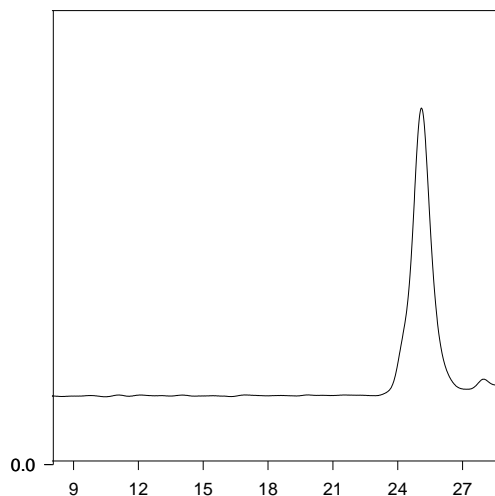


$^1\text{H-NMR}$ Spectrum of the PEG-RAFT:



SEC elugram of the Sample:

P42826-mPEG-RAFT



Size exclusion chromatography of the polymer: $M_n = 2,000$, $PI = 1.13$