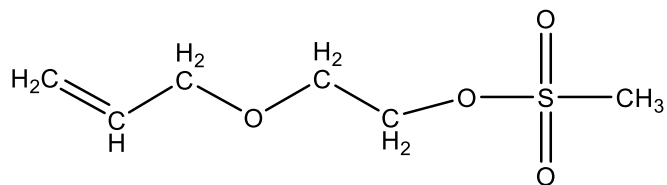


**Sample Name:** 2-(allyloxy)ethyl methanesulfonate

**Sample#:** AllyloxyMesylate

**Lot#:** P42521

**Structure:**



**Chemical Formula:** C<sub>6</sub>H<sub>12</sub>O<sub>4</sub>S

Mw (g/mol)	Purity:
180.1	98%

**Characterization:**

Structure confirmation and purity estimation were acquired from <sup>1</sup>H-NMR spectroscopy data.

**<sup>1</sup>H-NMR spectrum of the product run in CdCl<sub>3</sub>:**

