

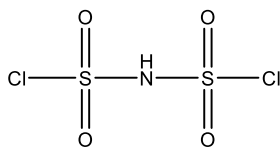
**Sample Name:** bis(chlorosulfonyl)amine

**Synonyms:** imido-bis(sulfuric acid) dichloride;  
imidobissulfuric acid chloride;  
imidobis(sulfonyl chloride);  
imidodisulphonyl chloride;  
bis(chlorosulfonyl)imide;  
di(chlorosulfonyl)imide;  
Imidodisulfurylchloride

**Sample#:** BCSA

**Lot#:** P42386

**Structure:**



**Composition:**

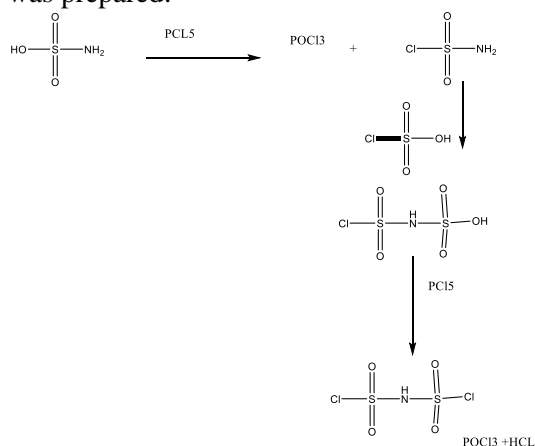
Mw (g/mol)	Purity:
214.04	+98%
B.P 1mm Hg	104 °C

Formula:	Cl <sub>2</sub> HNO <sub>4</sub> S <sub>2</sub>
CAS #:	15873-42-4

**Synthesis Route :**

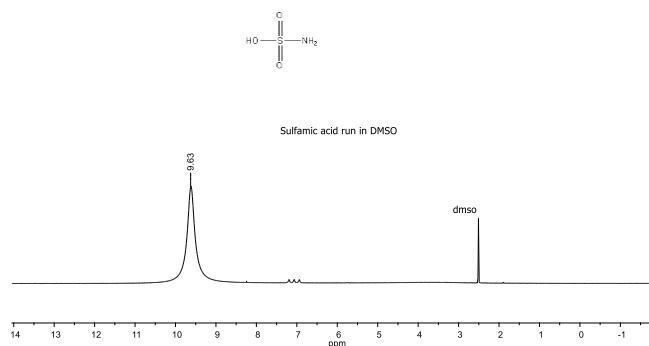
The following reaction scheme shows how the product was prepared:



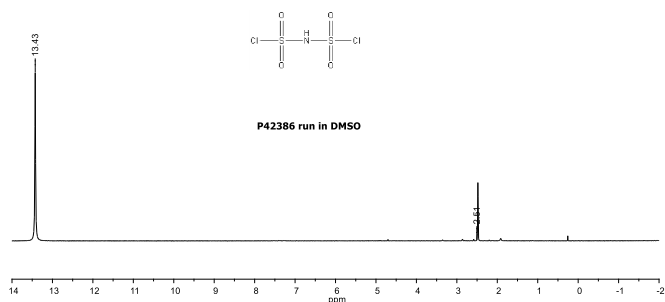
**Characterization:**

Structure confirmation and purity estimation were acquired from <sup>1</sup>H NMR data analysis.

**<sup>1</sup>H NMR spectrum of Sulfamic acid -in DMSO:**



**<sup>1</sup>H NMR spectrum of bis(chlorosulfonyl)amine -in DMSO:**



**FTIR spectrum of the Product :**

