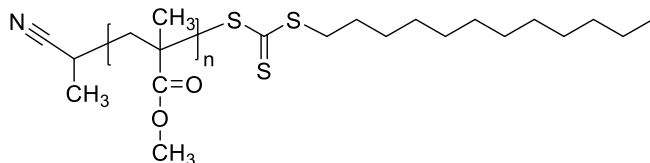


Sample Name: Poly(methyl methacrylate), RAFT-agent terminated

Sample #: P16418B-MMA-RAFT

Structure:



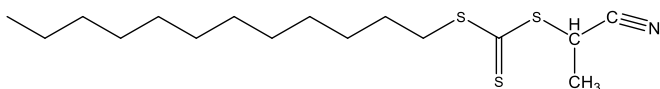
Composition:

Mn × 10 ³	PDI
38.5	1.65

Synthesis Procedure:

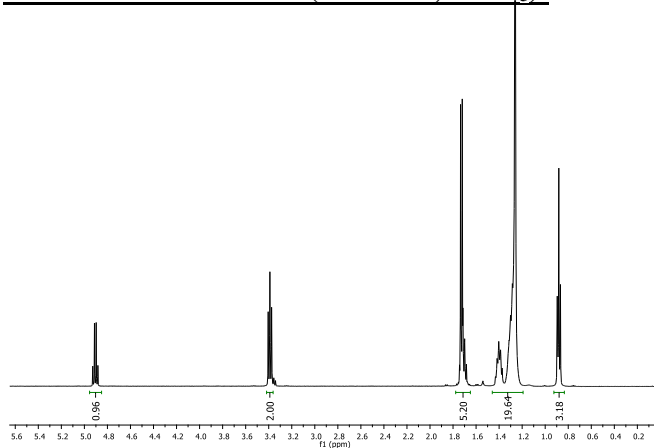
The polymer is prepared by RAFT polymerization process using following RAFT reagent:

Structure:



Molecular formula	C ₁₆ H ₂₉ NS ₃
Molecular weight	331.15
Purity:	> 95 %

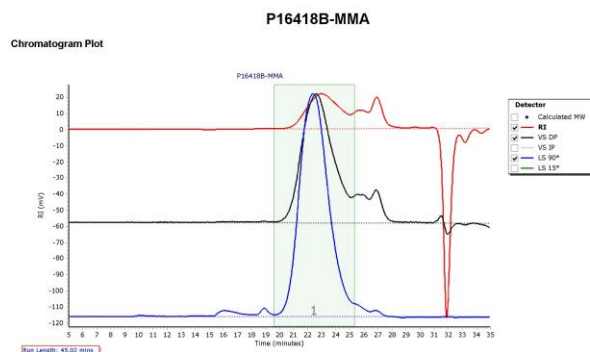
¹H NMR of RAFT CTA (500 MHz, CDCl₃):



Characterization:

The molecular weight and polydispersity index (PDI) of the polymer are obtained by size exclusion chromatography (SEC) in THF as eluent.

SEC elugram of the Sample:



Molecular Weight Averages							
Peak	Mp (g/mol)	Mn (g/mol)	Mw (g/mol)	Mz (g/mol)	Mz+1 (g/mol)	Mv (g/mol)	PD
Peak 1	58298	38612	63625	99152	142005	90111	1.648