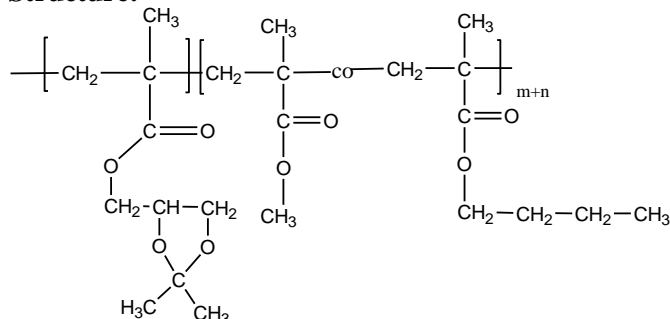


Sample Name:

Poly[Solketal methacrylate-b-(Methylmethacrylate – co-n-butyl methacrylate)]

Sample #: **P10528-SolMA-MMAAnBuMAran**

Structure:



Composition:

Mn × 10 ³	PDI
Solketal MA-b- MMAAnBuMAran	
775.0-b-301.0	1.63

MMA:nBuMA	66:34 ratio
-----------	-------------

Synthesis Procedure:

The polymer was synthesized by GTP polymerization process.

Characterization:

The product was characterized by size exclusion chromatography (SEC) and ¹H NMR.

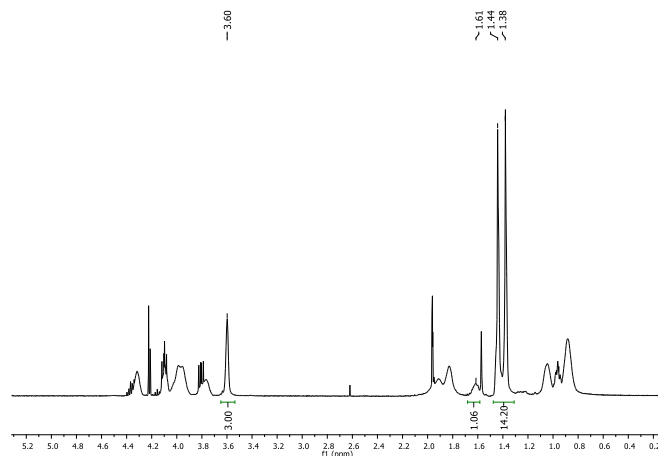
Thermal analysis:

Thermal analysis of the samples was carried out on a TA Q100 differential scanning calorimeter at a heating rate of 10°C/min. The midpoint of the slope change of the heat flow plot of the second heating scan was considered as the glass transition temperature (T_g).

Solubility:

Polymer is soluble in DMF, THF.

¹H NMR spectrum of the polymer



SEC elugram of the polymer:

