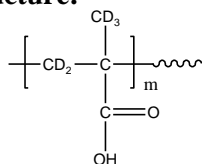


Sample Name:

Deuterated Poly (methacrylic acid) rich in atactic contents

Sample #: **P16405B-d5MAA**

Structure:



Composition:

Mn x 10 ³	PDI
13.0	1.3

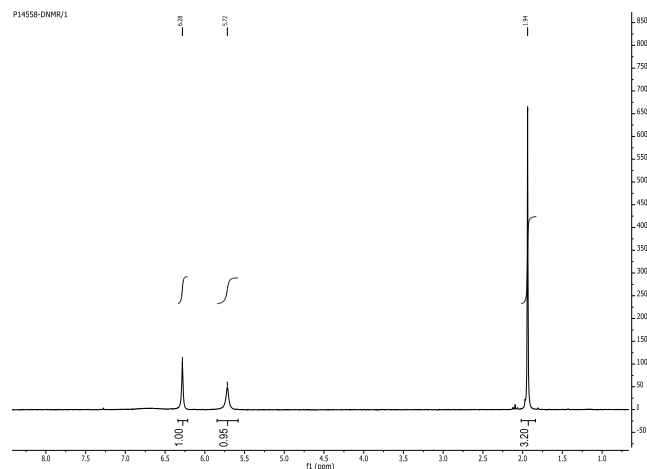
Synthesis Procedure:

The polymer was synthesized by RAFT polymerization process.

Characterization:

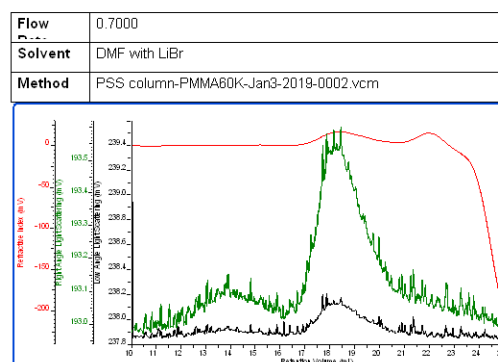
The product was characterized by size exclusion chromatography (SEC).

DNMR spectrum of the monomer:



SEC elugram of the polymer:

P16405-d5MAA



Solubility: Polymer is soluble in DMF, methanol and ethanol.