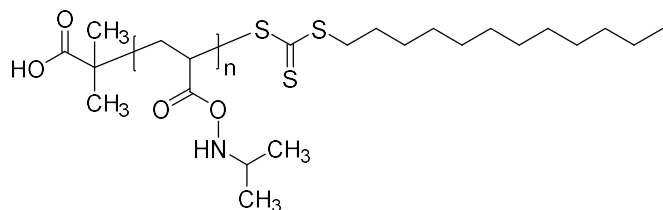


Sample Name:

**Poly (N-isopropylacrylamide), RAFT-agent terminated**

Sample #: P16399-NIPAM-RAFT

**Structure:**

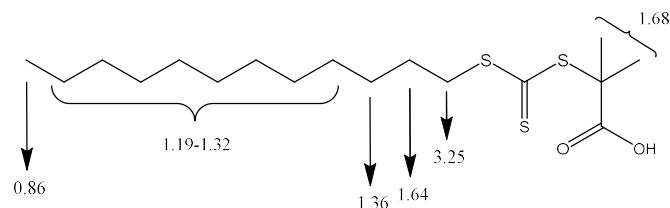


**Composition:**

Mn x 10 <sup>3</sup>	PDI
7.0	1.06

**Synthesis Procedure:**

The poly (N-isopropylacrylamide) was prepared by RAFT polymerization using the following chain transfer agent.



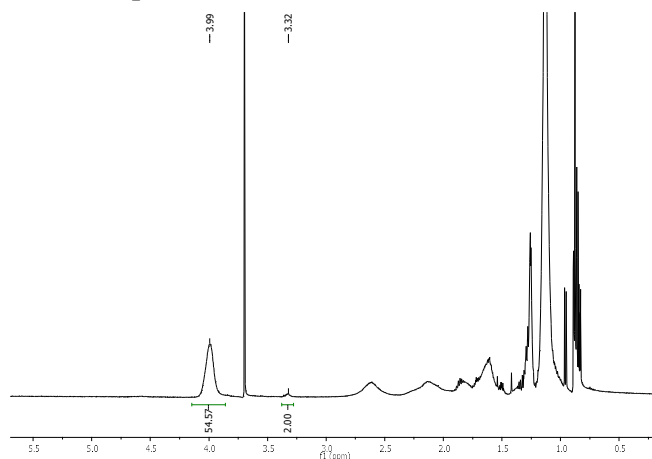
**Characterization:**

The molecular weight and polydispersity index (PDI) are obtained by size exclusion chromatography (SEC) in DMF.

**Solubility:**

Poly (N-isopropylacrylamide) is soluble in methanol, ethanol.

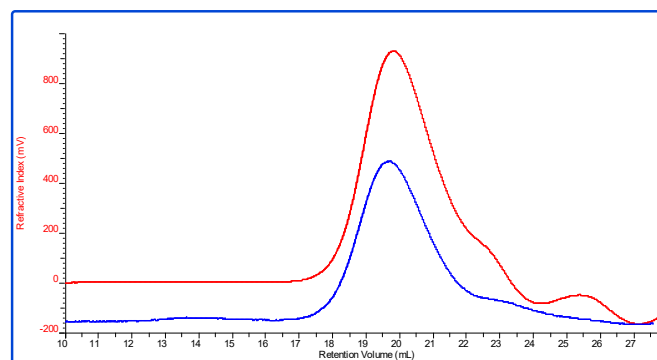
**<sup>1</sup>H NMR spectrum of PNIPAM:**



**SEC elugram of the polymer:**

**P16399-NIPAM**

dn/dc	0.0770
Flow	0.7000
Solvent	DMF with LiBr
Method	PSS column-PMMA60K-Jan3-2019-0002.vcm



Sample	Mn	Mw	Mz	IV	Mw/Mn
P16399_1_20	7,073	7,469	8,254	0.0394	1.056