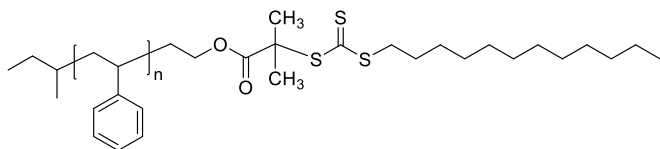


Sample Name: Poly (Styrene),  $\omega$ -RAFT-terminated

Sample #: P41656-SRAFT

**Structure:**

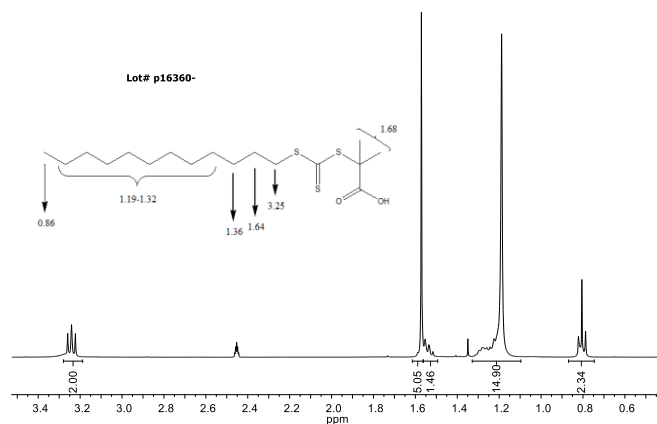


**Composition:**

Mn x 10 <sup>3</sup>	PDI
11.0	1.06

**Synthesis Procedure:**

The polymer is prepared by RAFT polymerization process using following RAFT reagent:



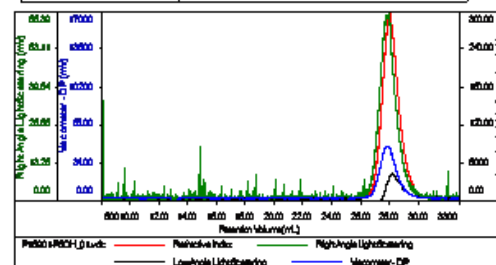
**Characterization:**

The chemical structure of the reagent was confirmed by FT-IR and <sup>1</sup>H NMR.

SEC elugram of the SOH polymer:

**SOH used**

Column label (mg/mL)	0.0050
Sample elution (mg/mL)	0.1000
Mobile Phase	PEEK-C18-250-4-1000um
Column Ref.	3x PL 1196233
Reagent	THF



Sample	Sample Name (mg/mL)	Sample Weight (mg)	Sample Peak (mL)	Sample Weight (mg)	Sample Weight (mg)
PEEK-C18-250-4-1000um	0.0050	0.1000	26.50	0.0050	0.1000