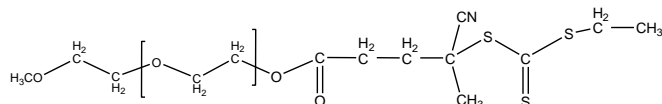


Sample Name: Poly(ethylene oxide) methyl ether, ω -RAFT-terminated

Sample #: P41472-mPEG-RAFT

Structure:



Composition:

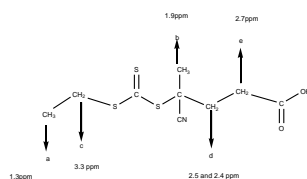
| | |
|-----------------------------|------|
| $M_n \times 10^3$ | 42.5 |
| PDI | 1.13 |
| RAFT functionality (by NMR) | >90% |

Solubility:

Poly (ethylene oxide) is soluble in toluene, CHCl_3 , Acetone, THF and water. It is Insoluble in ether, hexane and Precipitated from DCM or CHCl_3 into ether.

Characterization:

PEO bearing RAFT functionality was characterized by NMR.



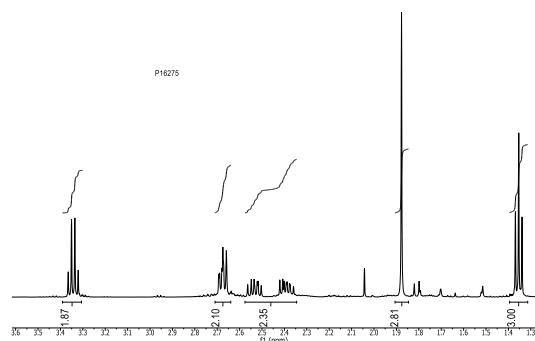
Composition:

| | |
|---------|--|
| Formula | $\text{C}_9\text{H}_{13}\text{NO}_2\text{S}_3$ |
| Mw | 263.40 |
| Purity | > 90% |

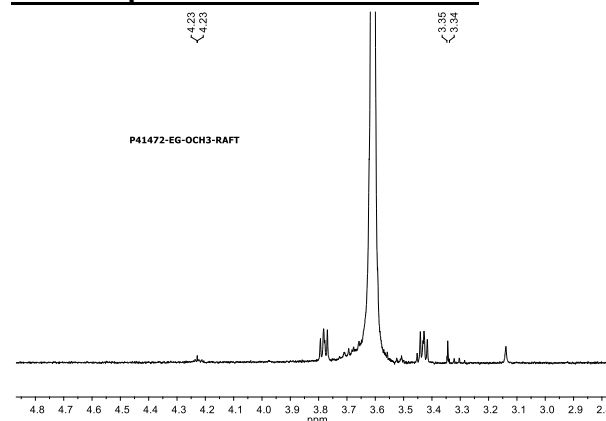
Characterization:

The structure of product was characterized and confirmed by ^1H NMR.

^1H NMR Spectrum of the RAFT:



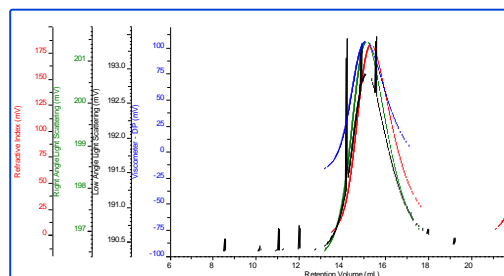
^1H NMR Spectrum of the PEG-RAFT:



SEC elugram of the Sample:

P41472-mPEG-RAFT

| | |
|---------|-------------------------------------|
| dn/dc | 0.0350 |
| Flow | 0.7000 |
| Solvent | DMF with LiBr |
| Method | PSS column-PMMA64K-Oct2018-0008.vcm |



| Sample | Mn | Mw | Mz | IV | Mw/Mn |
|---------------------|--------|--------|--------|--------|-------|
| P41472_1_2018-11-16 | 42,676 | 48,287 | 64,546 | 0.4042 | 1.131 |