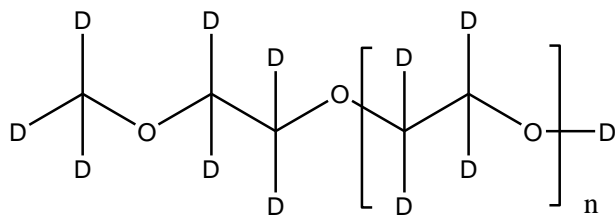


Sample Name: Deuterated Poly (ethylene glycol) methyl ether: completely deuterated

Sample #: P41242-dmPEG

Structure:



Composition:

Mn x 10 ³	PDI
0.6	1.10

Synthesis Procedure:

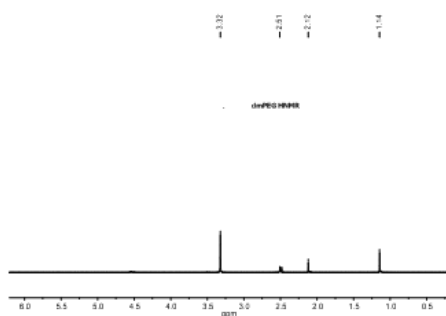
Deuterated Poly (ethylene glycol) methyl ether - completely deuterated- is obtained by living anionic polymerization process.

Characterization:

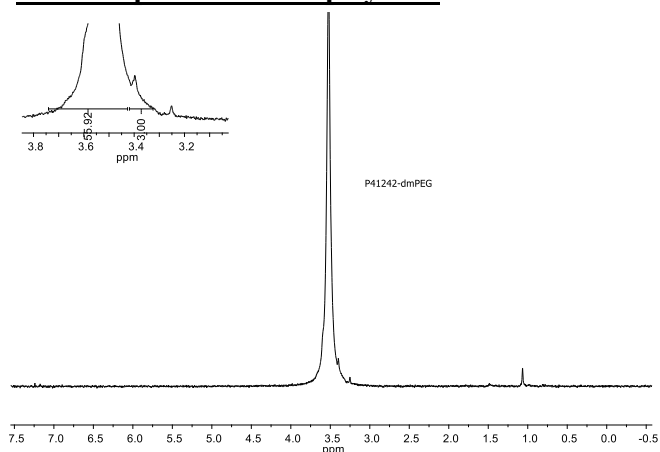
The product was characterized by size exclusion chromatography (SEC), elemental analysis and ¹H- DNMR.

Potassium analysis was done by GLI Procedure ME-70 Galbraith K<24 ppm

¹HNMR spectrum of the Polymer:

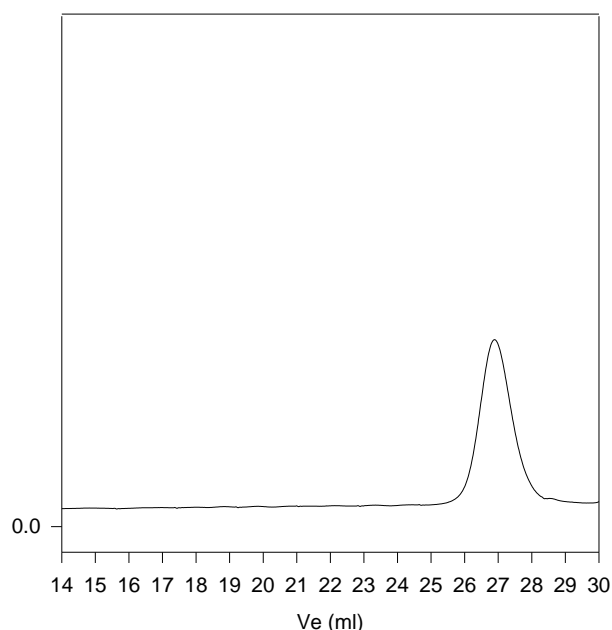


D NMR spectrum of the polymer:



SEC elugram of Sample:

P41242-dmPEG



Size exclusion chromatography of poly(ethylene glycol):
Mn=600, Mw=670, Mz=810, PI=1.10