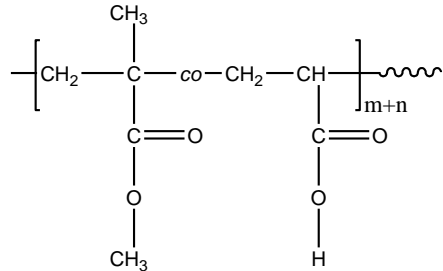


Sample Name:

**Isotactic rich Random Copolymer Poly(methyl methacrylate-co-Acrylic acid )**

Sample #: **P40587-MMAAAran-iso**

**Structure:**



**Composition:**

$\text{Mn} \times 10^3$ PMMA-co-PAA	PDI
10.0	1.5

PMMA: 8 mole%	
---------------	--

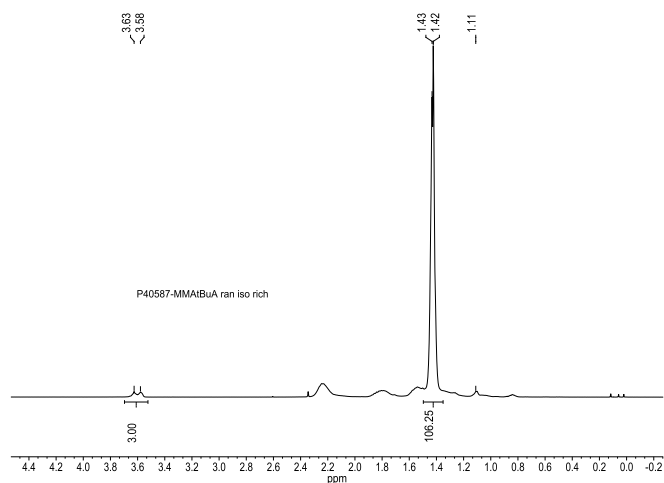
**Synthesis Procedure:**

Random Copolymer Poly (methyl methacrylate-co-Acrylic acid) is prepared by anionic polymerization process.

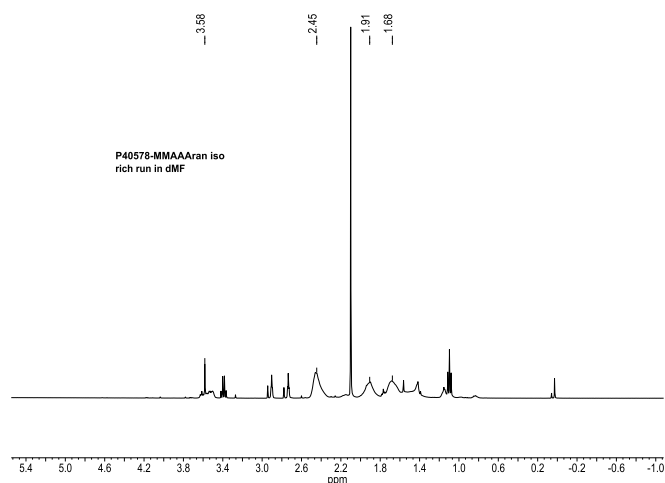
**Characterization:**

The product was characterized by size exclusion chromatography (SEC), and  $^1\text{H}$  NMR.

**$^1\text{H}$ -NMR Spectrum of the random copolymer MMA tBuA iso ran**

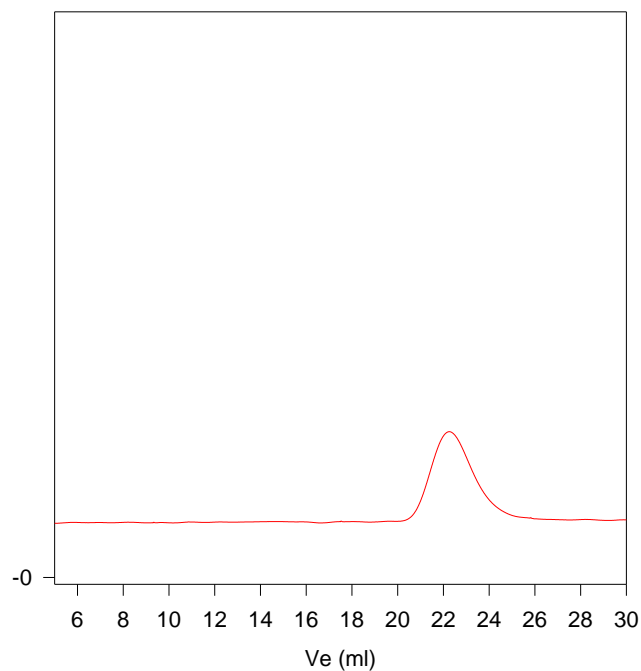


**$^1\text{H}$ -NMR Spectrum of the random copolymer MMA AA iso ran**



**SEC elugram of the random copolymer of MMA tBuA ran**

**P40587-MMA tBuA ran**



Size exclusion chromatograph of poly(MMA-co-tBuA):

$M_w=10,000$ ,  $M_n=15,500$ ,  $M_w/M_n=1.5$

Composition by HNMR: PMMA: 8.0 mol%