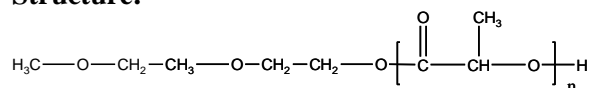


**Sample Name:** Polylactide mono  
methoxy terminated (DL form)

**Sample #:** P40949-LA (DL-Form)

**Structure:**

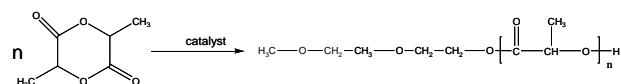


**Composition:**

$\text{Mn} \times 10^3$	PDI
2.3	1.20
$T_g (^{\circ}\text{C})$	24

**Synthesis Procedure:**

The polymerization of 3,6-dimethyl-1,4-dioxane-2,5-dione was carried out in bulk.



**Purification:**

The polymeric solution was precipitated from  $\text{CHCl}_3$  and/or acetone into a large excess of hexane.

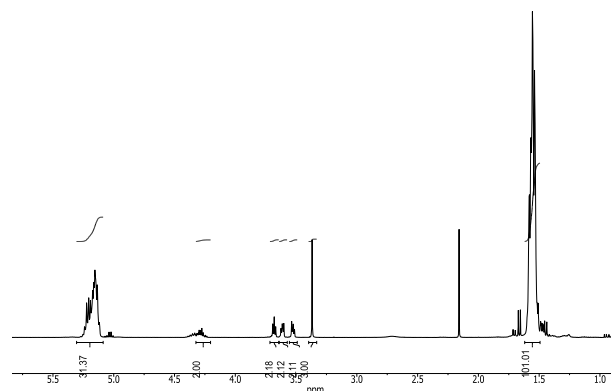
**Solubility:**

Poly (DL-lactide) is soluble in toluene, THF,  $\text{CHCl}_3$  and  $\text{CH}_2\text{Cl}_2$ . The polymer is insoluble in methanol, hexane and ether.

**Characterization:**

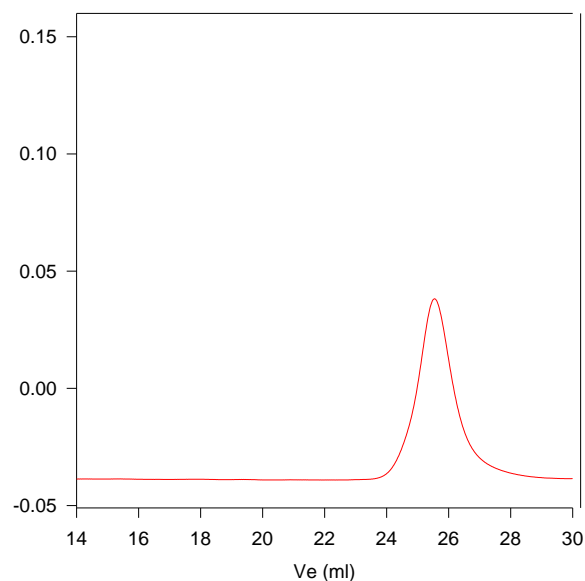
The molecular weight is obtained from  $^1\text{H}$  NMR and polydispersity index (PDI) was obtained by size exclusion chromatography.

**$^1\text{H}$  NMR of the polymer:**



**SEC of polylactide:**

**P40949-LA(DL form)**



Size exclusion chromatograph of polymer  
 $M_n=2300$ ,  $M_w=2800$ ,  $PI=1.20$