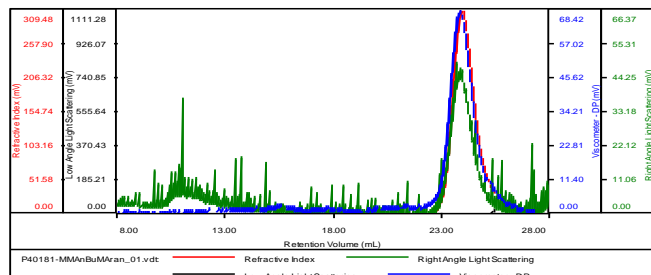




## SEC elugram of MMA-nBuMA [first block]:

### P40181-1

Concentration (mg/mL)	12.3400
Sample dn/dc (mL/g)	0.0840
Method File	PS80K-Nov2016-6-0000.vcm
Column Set	3x PL 1113-6300
Solvent	THF

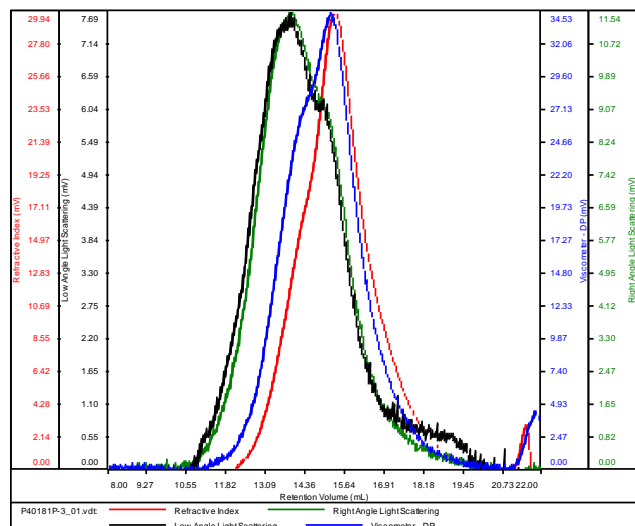


Sample	Mn (Da)	Mw (Da)	Mw/Mn	IV (dL/g)	Mp (Da)
P40181-MMA-nBuMAran	21,063	22,656	1.076	0.2264	23,487

## SEC of MMA-nBuMA-b-HEMATMS [protected diblock]:

### P40181-MMA-nBuMA-b-HEMA

Conc (mg/mL)	7.0562
dn/dc (mL/g)	0.0650
Method	PS80K_December-2016-0004.vcm
Solvent	DMF w 0.023M LiBr
Column	PSS



Sample	Mn	Mw	Mp	Mw/Mn	IV
P40181P-3_01.vdt	100,811	175,732	94,575	1.743	0.1500

## DSC thermogram of MMA-nBuMA-b-HEMA diblock copolymer (2<sup>nd</sup> heating scan, 10°C/min):

