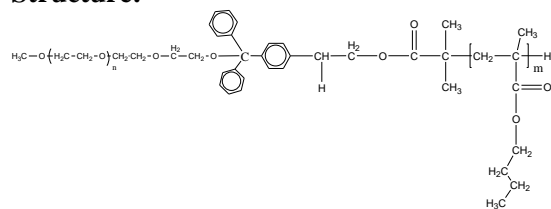


Sample Name: Acid Cleavable Poly (ethylene oxide-b-n-Butyl methacrylate)

Sample #: P40813B-EOnBuMA cleavable

Structure:

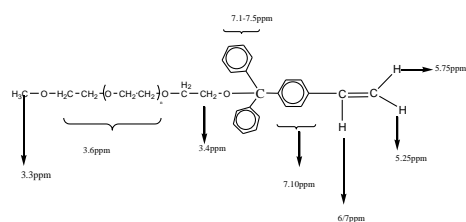


Composition:

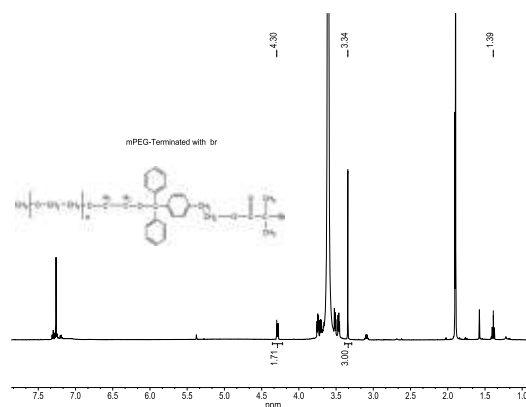
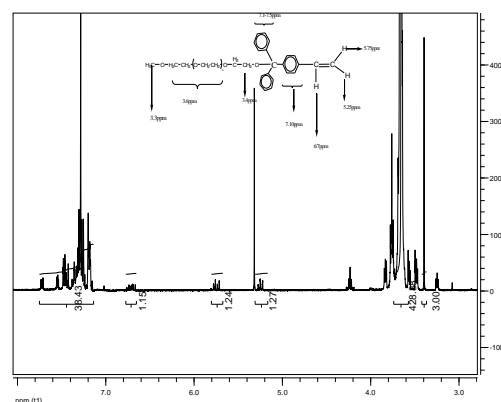
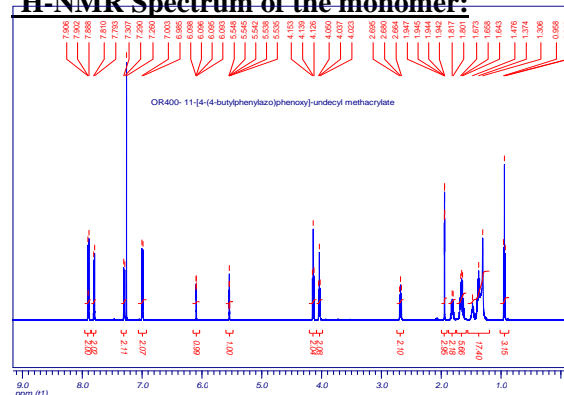
Mn $\times 10^3$ PEO-b-nBuMA	PDI
5.0-b-35.0	1.35

Characterization:

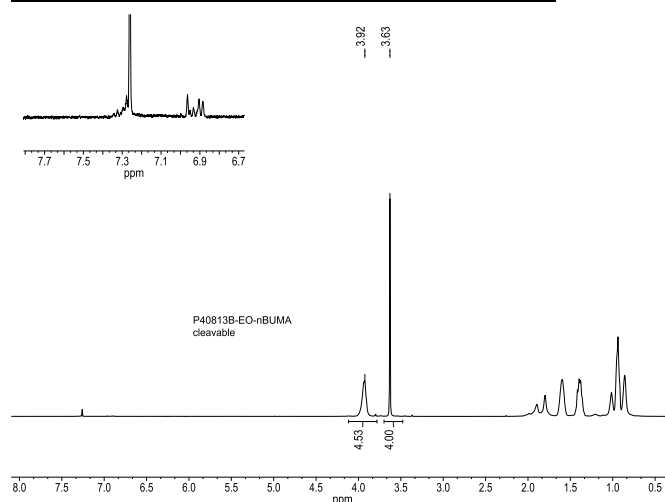
The product was characterized by size exclusion chromatography (SEC) and ^1H NMR.



^1H -NMR Spectrum of the monomer:



^1H -NMR Spectrum of the block copolymer:



SEC of the block copolymer:

P40813A-EOMMA Cleavable

