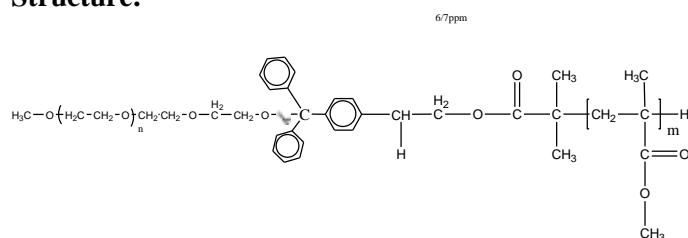


Sample Name: Acid Cleavable Poly (ethylene oxide-b-MMA)

Sample #: P40813A-EOMMA cleavable

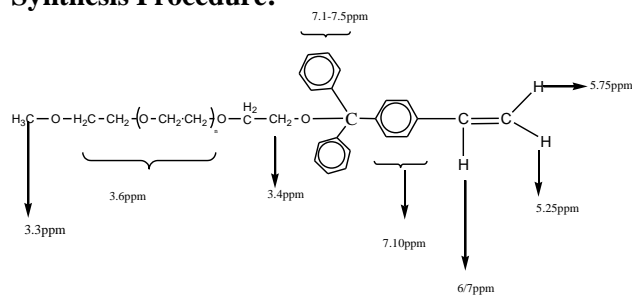
Structure:



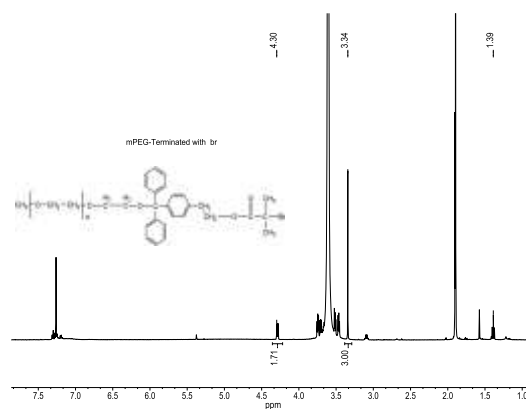
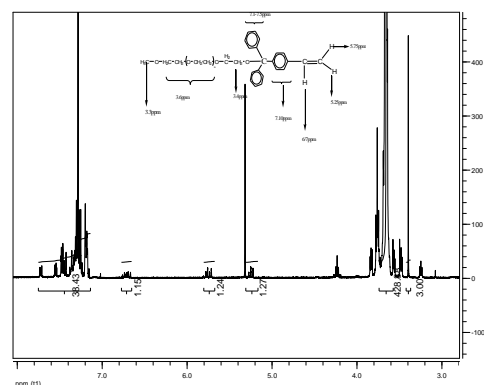
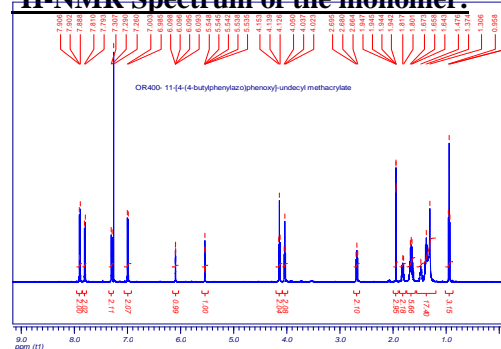
Composition:

Mn $\times 10^3$ PEO-b-PMMA	PDI
5.0-b-15.0	1.25
T _g for MMA block: 108°C	T _g for EO block: not found

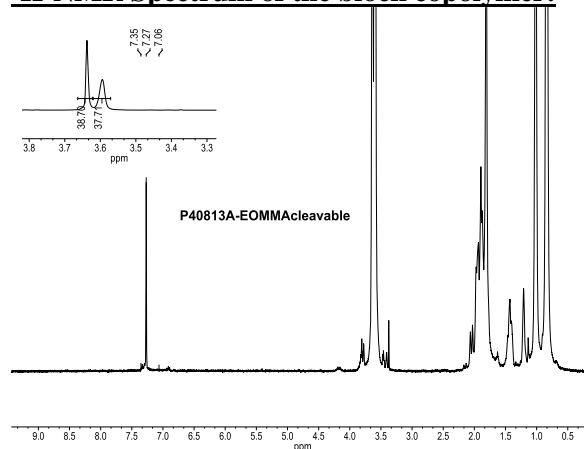
Synthesis Procedure:



¹H-NMR Spectrum of the monomer:

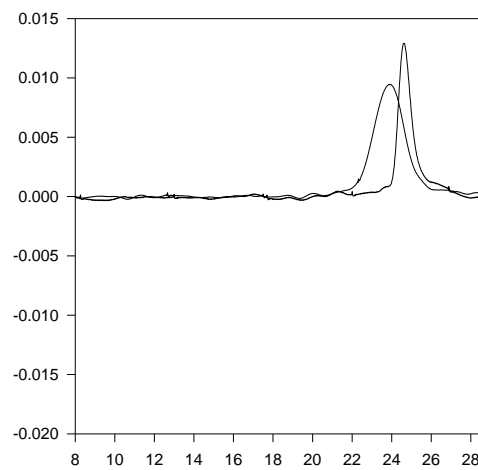


¹H-NMR Spectrum of the block copolymer:



SEC elugram of the block copolymer:

P40813A-EOMMA Cleavable



Size exclusion chromatography of poly(EO-b-MMA)

— PEG block $M_n=5000$, $M_w=5300$, $M_w/M_n=1.05$
 — Poly(ethylene glycol-b-Methylmethacrylate)
 Mn: PEO(5000)-b-MMA(15000) $M_w/M_n=1.25$
 Composition from ¹H NMR