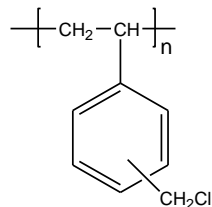


**Sample Name: Poly (vinyl benzyl chloride)**  
*Para isomer > 90%*

**Sample #: P16160-VBC**

**Structure:**



**Composition:**

$M_n \times 10^3$	PDI
14.5	1.20

**Synthesis Procedure:**

Poly (vinyl benzyl chloride) is obtained by RAFT polymerization process.

**Characterization:**

The molecular weight and polydispersity index (PDI) of Poly (vinyl benzyl chloride) are obtained by size exclusion chromatography (SEC).

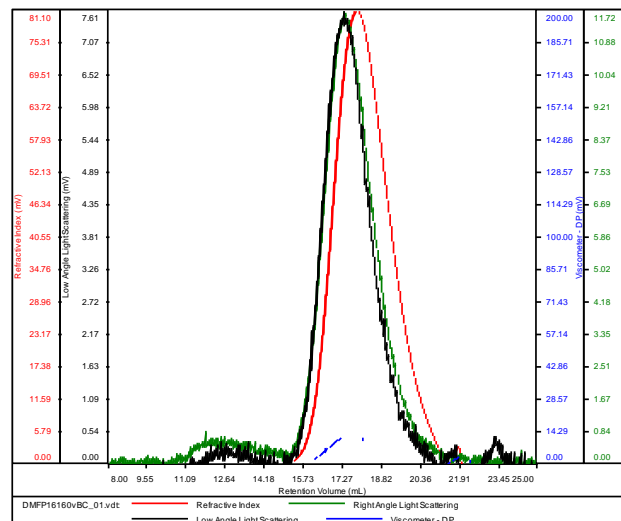
**Solubility:**

Polymer is soluble in DMF, THF, toluene and  $\text{CHCl}_3$ . It precipitates from methanol, ethanol, water and hexanes.

**SEC of homopolymer:**

**P16160-VBC**

Conc (mg/mL)	7.7321
dn/dc (mL/g)	0.1650
Method	PS80k_December-2016-0004.vcm
Solvent	DMF w 0.023M LiBr
Column	PSS



Sample	$M_n$	$M_w$	$M_p$	$M_w/M_n$	IV
DMFP16160VBC_01.vdt	14,420	17,362	17,167	1.204	0.0404