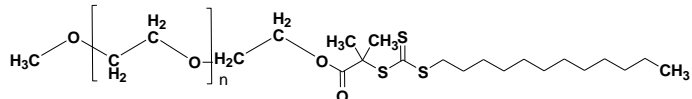


Sample Name: Poly(ethylene oxide) methyl ether, ω -RAFT-terminated

^1H NMR of the product:

Sample #: P16087-mPEG-RAFT

Structure:



Composition:

$M_n \times 10^3$	2.0
PDI	1.1
RAFT functionality (by NMR)	>90%

Solubility:

Poly (ethylene oxide) is soluble in toluene, CHCl_3 , Acetone, THF and water. It is Insoluble in ether, hexane and Precipitated from DCM or CHCl_3 into ether.

Characterization:

PEO bearing RAFT functionality was characterized by NMR by comparing the integrals ratio of the peaks at 3.36 and 3.63 ppm, and 3.63 and 4.24 ppm, respectively.

Chemical shifts assignments

