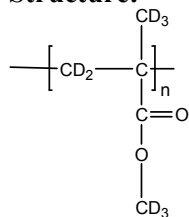


Sample Name: Poly (methyl methacrylate)-d₈
Atactic rich

Sample #: P40243-dPMMA

Structure:



Composition:

Mn x 10 ³	PDI
67.0	1.2
Tg	100 °C

Synthesis Procedure:

Deuterated poly (methyl methacrylate)-d₈ is obtained by living anionic polymerization.

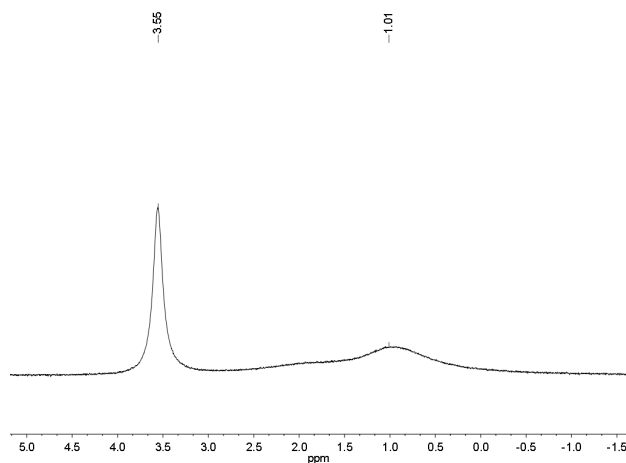
Characterization:

The product was characterized by size exclusion chromatography (SEC) and dNMR.

Solubility:

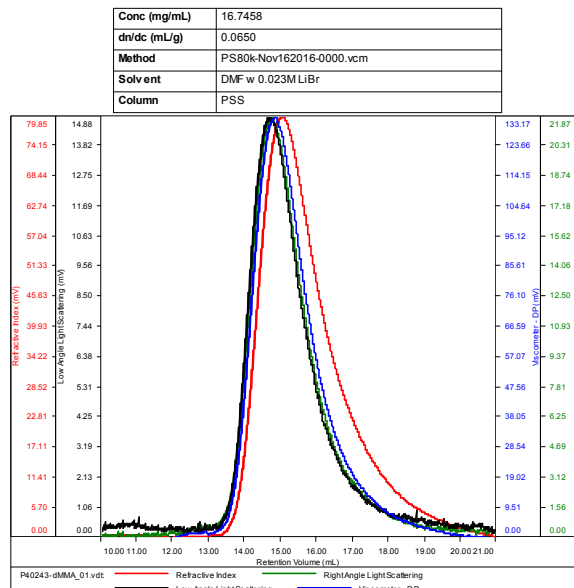
Deuterated poly (methyl methacrylate)-d₈ is soluble in THF, CHCl₃, toluene and dioxane. The polymer precipitates from hexanes, methanol and ethanol.

D NMR for the polymer: Atactic rich



SEC of Homopolymer:

P40243-d8PMMA



Sample	Mn	Mw	Mp	Mw/Mn	IV
P40243-dMMA_01.vdt	66,834	80,226	87,487	1.200	0.1738

Thermogram of the sample:

