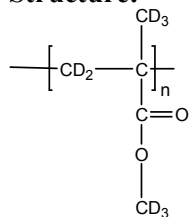


Sample Name: Poly (methyl methacrylate)-d₈
Atactic rich

Sample #: P40253-dPMMA

Structure:



Composition:

| Mn x 10 ³ | PDI |
|----------------------|--------|
| 163.0 | 1.12 |
| Tg | 127 oC |

Synthesis Procedure:

Deuterated poly (methyl methacrylate)-d₈ is obtained by living anionic polymerization.

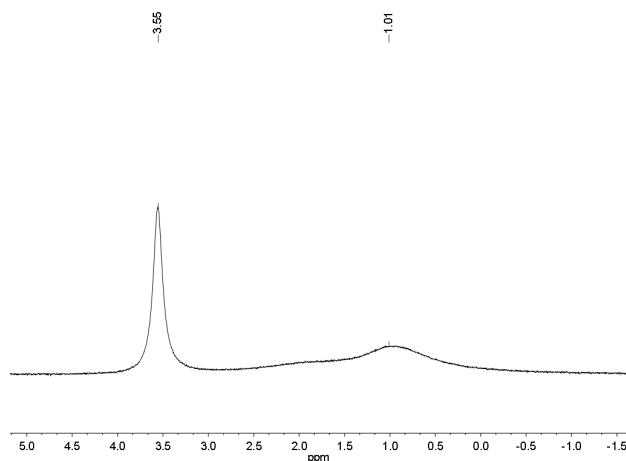
Characterization:

The product was characterized by size exclusion chromatography (SEC) and dNMR.

Solubility:

Deuterated poly (methyl methacrylate)-d₈ is soluble in THF, CHCl₃, toluene and dioxane. The polymer precipitates from hexanes, methanol and ethanol.

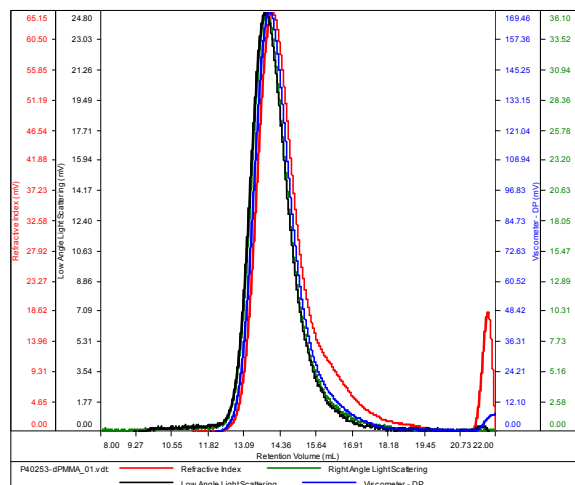
D NMR for the polymer: Atactic rich



SEC of Homopolymer:

P40253-d8PMMA

| | |
|--------------|--------------------------|
| Conc (mg/mL) | 10.6465 |
| dn/dc (mL/g) | 0.0650 |
| Method | PS80k-Nov162016-0000.vcm |
| Solvent | DMF w 0.023M LiBr |
| Column | PSS |



| Sample | Mn | Mw | Mp | Mw/Mn | IV |
|---------------------|---------|---------|---------|-------|--------|
| P40253-dPMMA_01.vdt | 162,892 | 182,891 | 186,115 | 1.123 | 0.2941 |

Thermogram of the sample:

