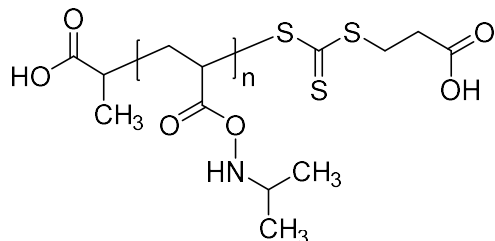


Sample Name: Poly(N-isopropylacrylamide), RAFT-agent terminated

Sample #: P16070-NIPAM-RAFT macroinitiator

Structure:



Composition:

Mn x 10 ³	PDI
39.5	1.4

Synthesis Procedure:

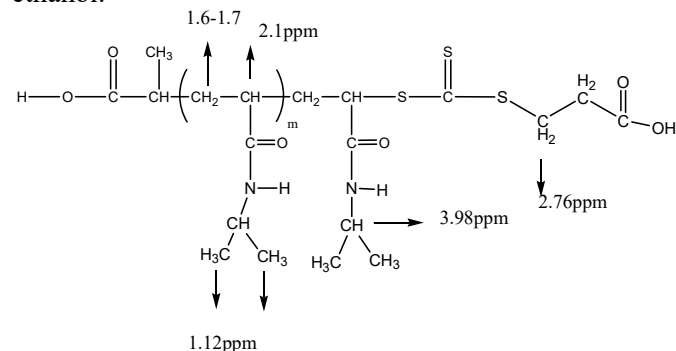
The poly(N-isopropylacrylamide) was prepared by RAFT controlled process.

Characterization:

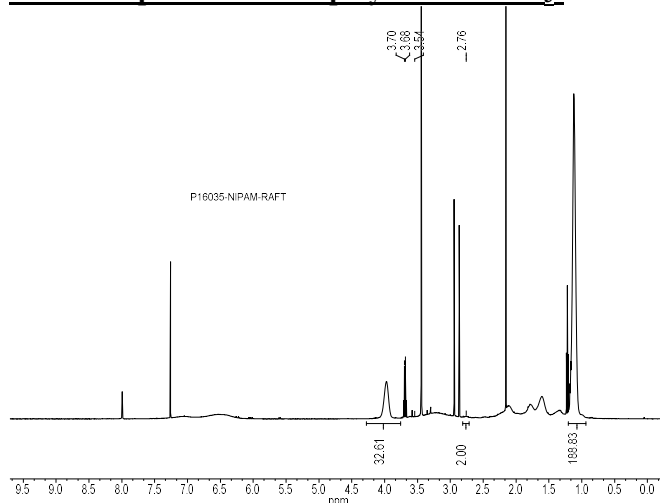
The molecular weight and polydispersity index (PDI) are obtained by size exclusion chromatography (SEC) in DMF. SEC analysis was performed on a Varian liquid chromatograph equipped with refractive and light scattering detectors.

Solubility:

Poly(N-isopropylacrylamide) is soluble methanol, ethanol.

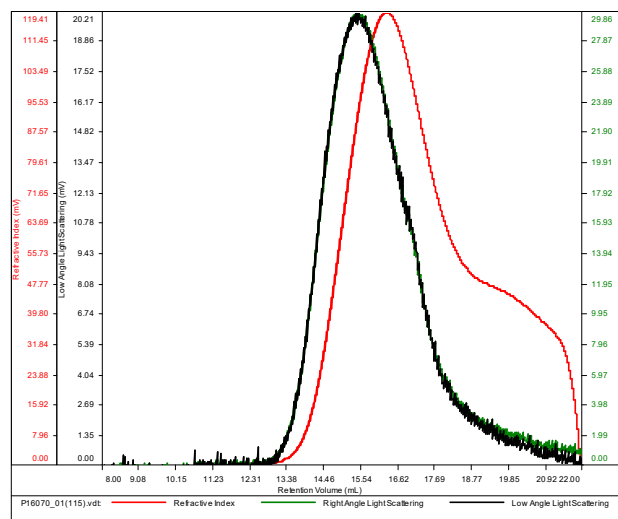


¹H NMR spectrum of the polymer in CDCl₃:



SEC elugram of the polymer:
P16070-NIPAM-RAFT

Conc (mg/mL)	17.6777
dn/dc (mL/g)	0.0770
Method	PS80k-July22-2016-0000.vcm
Solvent	DMF w 0.023M LiBr
Column	PSS



Sample	Mn	Mw	Mp	Mw/Mn	IV
P16070_01(115).vdt	39,410	57,744	52,442	1.465	0.1826